

EMTONE[®]

ALCANCE O FUTURO DA REDUÇÃO DA CELULITE



EMTONE[®]

BTLAESTHETICS.COM

EMTONE[®]
combina:

RF Monopolar
e
Energia de Pressão
Direcionada.



EMTONE[®]

BTLAESTHETICS.COM

EMTONE®

Uma solução única,
não invasiva,
combinando 2
tratamentos já
comprovados para o
tratamento da celulite.



EMTONE®

BTLAESTHETICS.COM



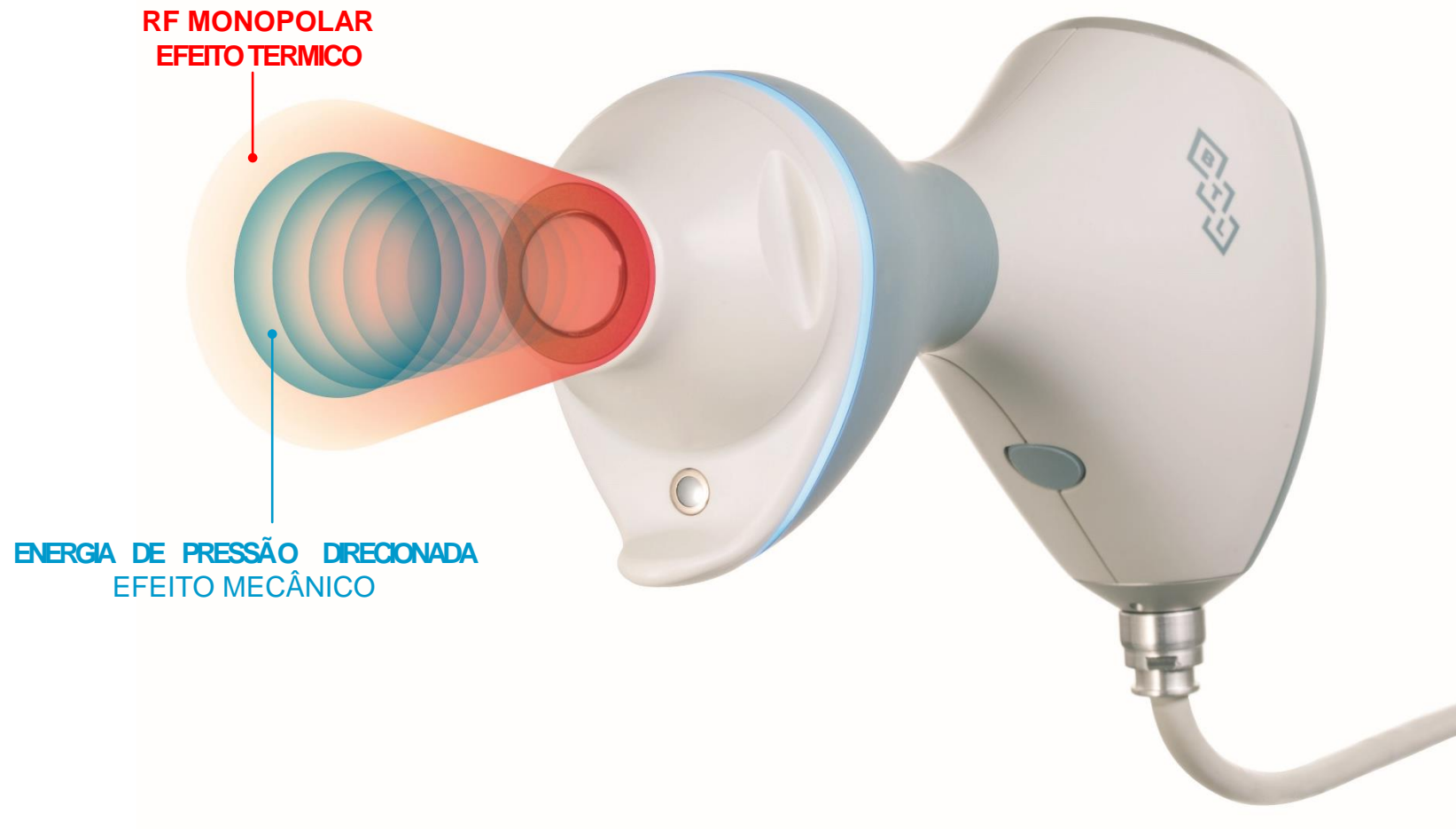
**Reduz o tempo de terapia
Aumenta o resultado**



EMTONE®

BTLAESTHETICS.COM

EMTONE TECNOLOGIA



EMTONE®

BTLAESTHETICS.COM

PRINCIPAIS CAUSAS DA CELULITE

1

Lóbulos de gordura com volume aumentado na camada da Hipoderme causam uma pressão para os espaços interlobulares

2

As fibras de colágeno permanecem puxando para dentro contra a força da pressão que é em sentido superficialmente (cavinha)

3

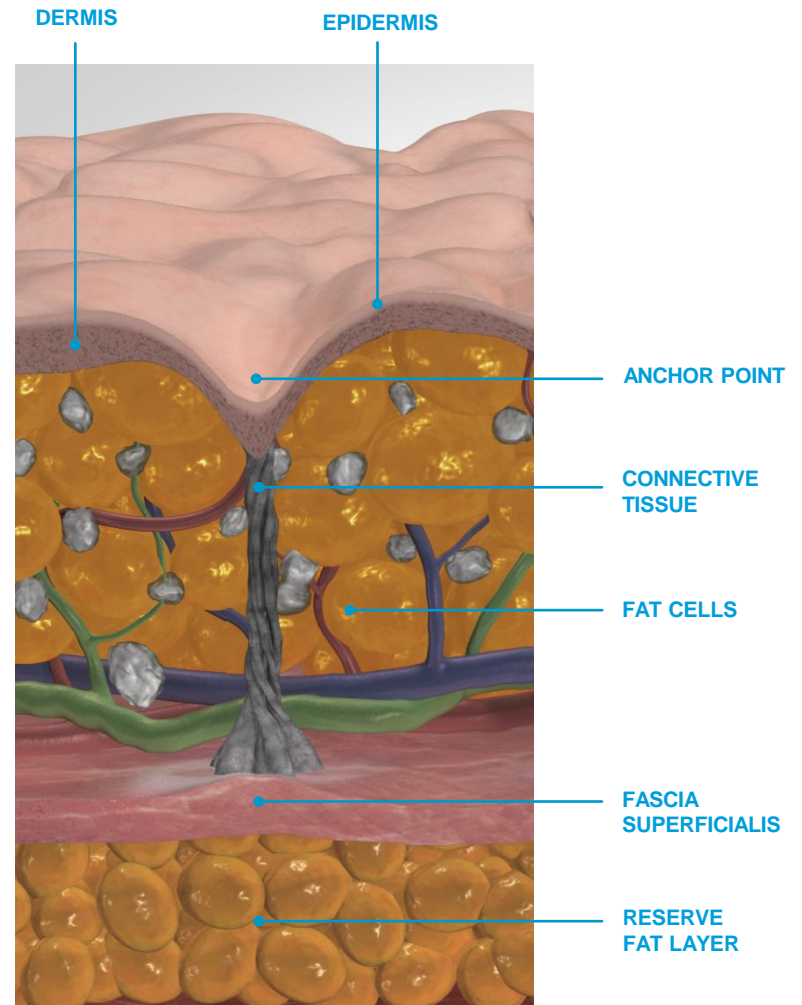
Perda da elasticidade da pele diminui a resistência para a pressão interna

4

Pobre fluxo sanguíneo

5

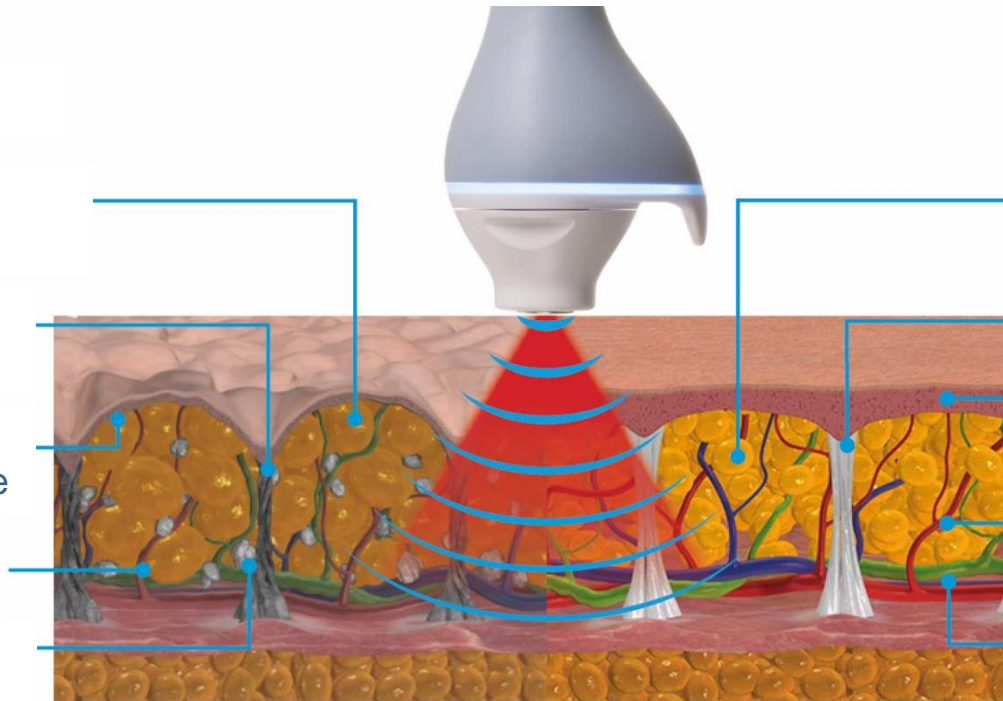
Acúmulo de resíduos metabólicos no espaço interticial



COMO EMTONE[®] FUNCIONA?

ANTES

- ① Lóbulos de gordura aumentados
- ② Fibras de colágeno danificadas
- ③ Perda de elasticidade da pele
- ④ Fluxo sanguíneo deficiente
- ⑤ Acúmulo de resíduos metabólicos



DEPOIS

- ① Diminuição dos lóbulos de gordura
- ② Remodelamento do colágeno
- ③ Restauração da elasticidade da pele
- ④ Melhora do fluxo sanguíneo
- ⑤ Aumento da remoção de resíduos metabólicos

EFEITO SIMULTÂNEO EFICIÊNCIA IMBATÍVEL

ANTES

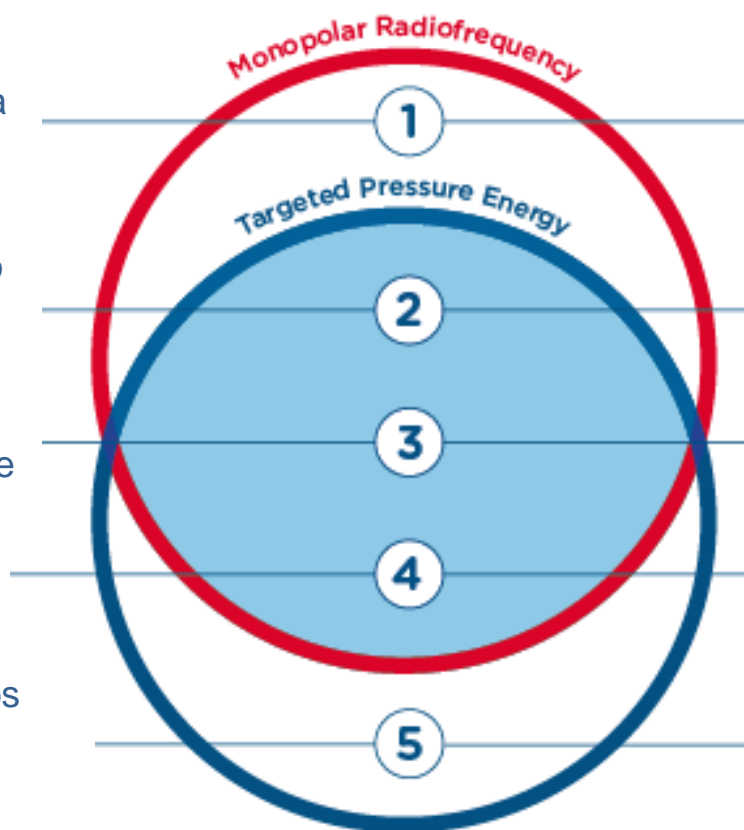
Lóbulos de gordura aumentados

Fibras de colágeno danificadas

Perda de elasticidade da pele

Fluxo sanguíneo deficiente

Acúmulo de resíduos metabólicos



DEPOIS

Diminuição dos lóbulos de gordura

Remodelamento do colágeno

Restauração da elasticidade da pele

Melhora do fluxo sanguíneo

Aumento da remoção de resíduos metabólicos



EMTONE

ESTU

EMTONE™: SYNERGY OF SIMULTANEOUS DELIVERY OF RF AND TARGETED PRESSURE ENERGY FOR CELLULITE REDUCTION

SAFETY AND EFFICACY OF NOVEL TECHNOLOGY FOR CELLULITE TREATMENT BASED ON SIMULTANEOUS APPLICATION OF MONOPOLAR RADIOFREQUENCY AND TARGETED PRESSURE ENERGY

Mariano Busso, MD¹; Trevor M. Born, MD²

¹ Aesthetic Dermatology, Coconut Grove, FL, USA
² TMB Cosmetic Surgery, Toronto, ON, Canada

Presented at the Annual Meeting of the American Society for Laser Medicine and Surgery, 2020.

HIGHLIGHTS

- 30 subjects with cellulite (grade 2 to 3) were enrolled. All subjects underwent four treatments (two sessions per week) in desired area.
- 87% of the subjects reported improvement in the appearance of the treatment area.
- Total of 86% of the photographs were rated as significant improvement in the treated area.
- 90% of the patients would undergo the EMTONE treatment again.



Example of patient photographs before (left) and after 4th treatment.

KEYWORDS

cellulite, noninvasive, radiofrequency, laser

This is an open access article under the terms of the Creative Commons Attribution-NonCommercial-NoDerivs License, which permits use, distribution and reproduction in any medium, provided the original work is properly cited, the use is non-commercial and no modifications or adaptations are made.
© 2018 The Authors. Journal of Cosmetic Dermatology Published by Wiley Periodicals, Inc.
J Cosmet Dermatol. 2018;1-4.



EMTONE®

BTLAESTHETICS.COM

ESTUDO HISTOLÓGICO: APLICAÇÃO SIMULTÂNEA x CONSECUTIVA

HISTOLOGICAL EXAMINATION OF SKIN TISSUE IN THE PORCINE ANIMAL MODEL AFTER SIMULTANEOUS AND CONSECUTIVE APPLICATION OF MONOPOLAR RADIOFREQUENCY AND TARGETED PRESSURE ENERGY. Brian Kinney M.D., Dian Kanakov M.D., Penka Yonkova, PhD

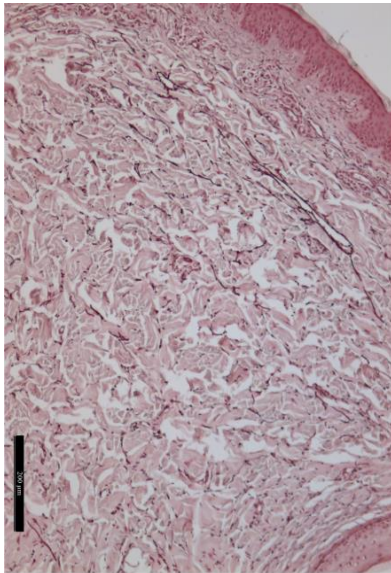
- 2 GRUPOS
- Aplicação simultânea
- Aplicação consecutiva
- Aplicação Simultânea de RF e TPE mostrou melhora profunda no tecido conectivo quando comparado com tratamento consecutivo.
- Medidas mensuráveis da significância e efeito da Sinergia das duas tecnologias em simultâneo, como a redução do tamanho do adipócito e o aumento do número de vasos sanguíneos



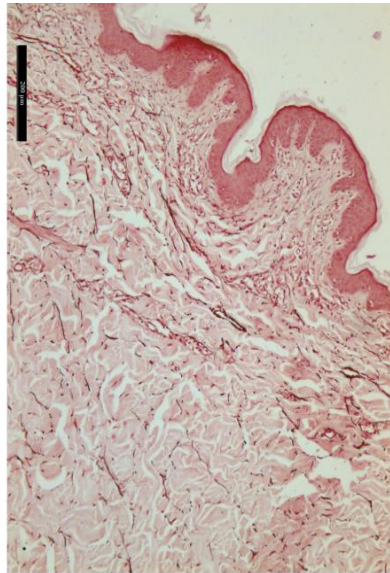
HISTOLOGICAL STUDY: SIMULTANEOUS vs. CONSECUTIVE APPLICATION

HISTOLOGICAL EXAMINATION OF SKIN TISSUE IN THE PORCINE ANIMAL MODEL AFTER SIMULTANEOUS AND CONSECUTIVE APPLICATION OF MONOPOLAR RADIOFREQUENCY AND TARGETED PRESSURE ENERGY. Brian Kinney M.D., Dian Kanakov M.D., Penka Yonkova, PhD

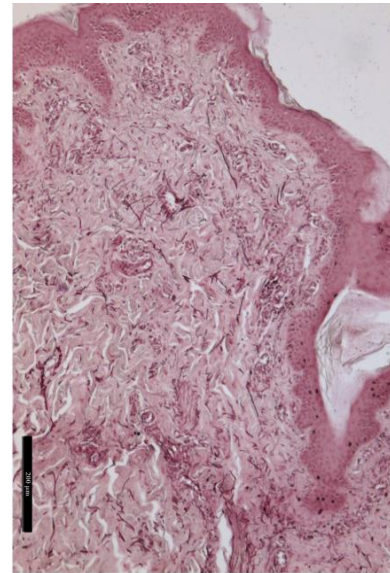
CONTROL



CONSECUTIVE



SIMULTANEOUS



59%

Maior aumento de colágeno

64%

Maior aumento de elastina

44%

Maior aumento da densidade da derme



EMTONE®

BTLAESTHETICS.COM

HISTOLOGIA – COLÁGENO e ELASTINA

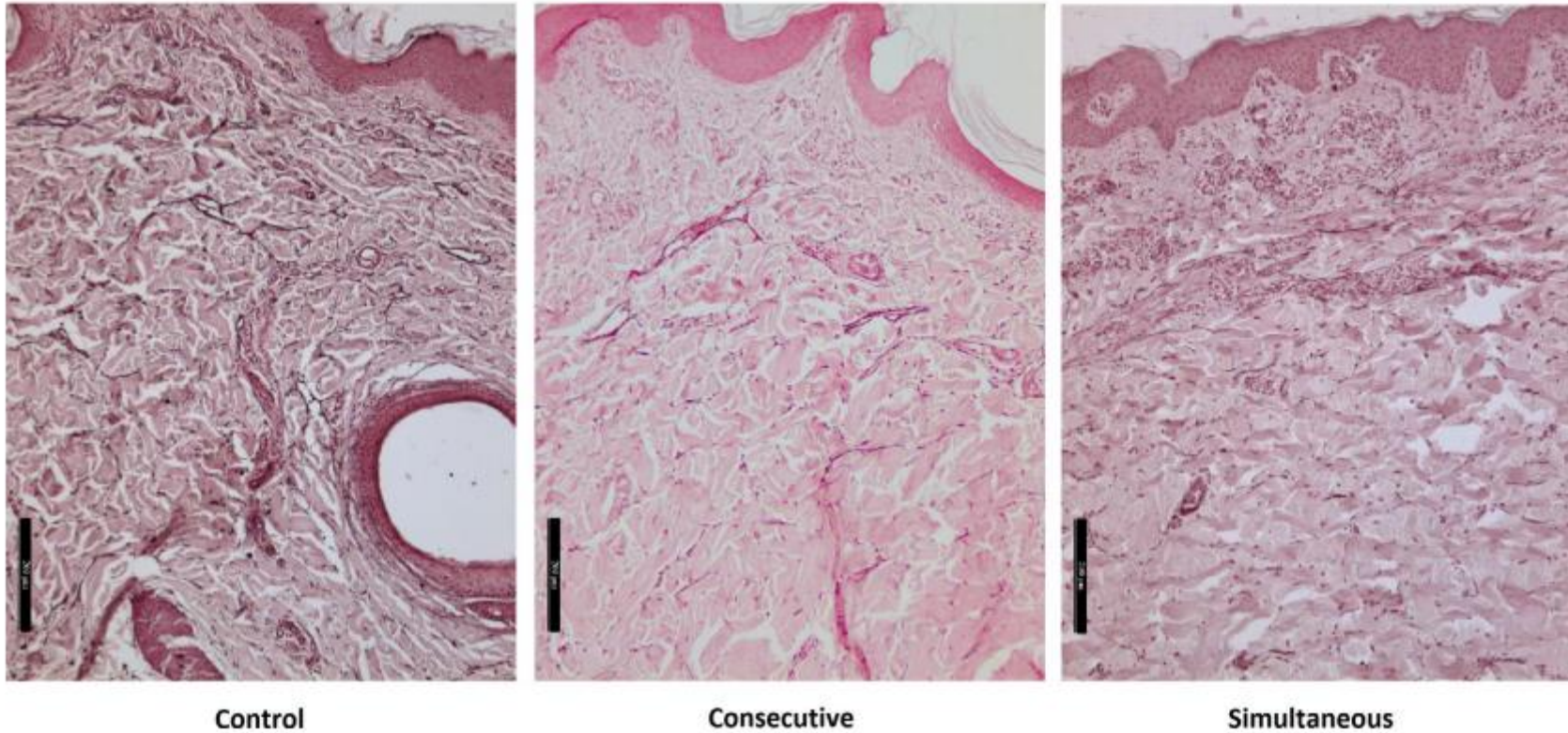
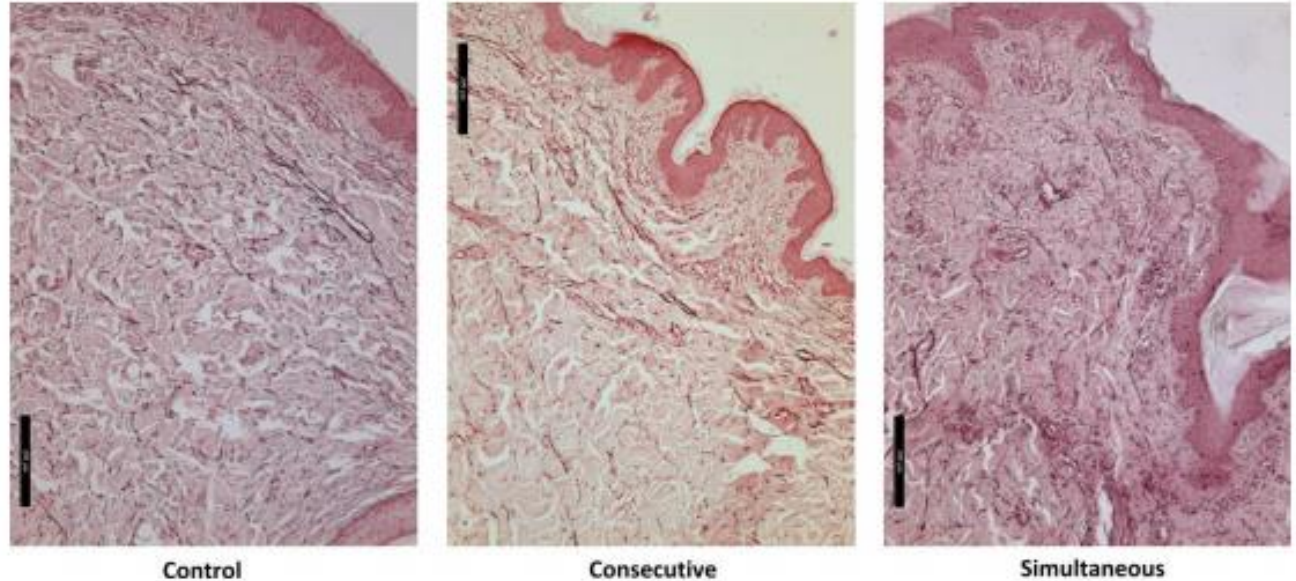


FIGURE 2 Increase of collagen and elastin amount—area encompassed on examined slices (A, mean \pm SD). B, shows illustrative histological comparison of control/consecutive/simultaneous samples at 1-mo follow-up. The collagen and elastin fibers are denser and thicker in the consecutive/simultaneous samples. Samples of treated tissue are also showing greater vascularization, especially in the upper part of reticular dermis. Detail of the dermis, bar 200 μ m

HISTOLOGIA – vascularização

FIGURE 6 Illustration of increased vascularization. Samples were taken at 1-mo follow-up. Consecutive/simultaneous samples are showing greater vascularization, denser organization, and thickness of connective fibers in comparison with the control. Detail of the dermis; bar 200 μ m



Maior vascularização

Maior organização das fibras do tecido conectivo

Maior densidade das fibras do tecido conectivo



ULTRASSOM e TERMOGRAFIA REDUÇÃO CELULITE

CLINICAL EVALUATION OF SIMULTANEOUSLY APPLIED MONOPOLAR RADIOFREQUENCY AND TARGETED PRESSURE ENERGY AS A NEW METHOD FOR NON-INVASIVE TREATMENT OF CELLULITE IN POST-PUBERTAL WOMEN. Prof. Klaus Fritz M.D., Prof. Carmen Salavastru, M.D., Magdalena Gyurova M.D.

- 30 patients, 4 sessões, 3meses follow-up.

93%

Redução visível da celulite

2.2 cm

Redução circunferência da coxa



ULTRASSONOGRAFIA – espessura da derme, hipoderme

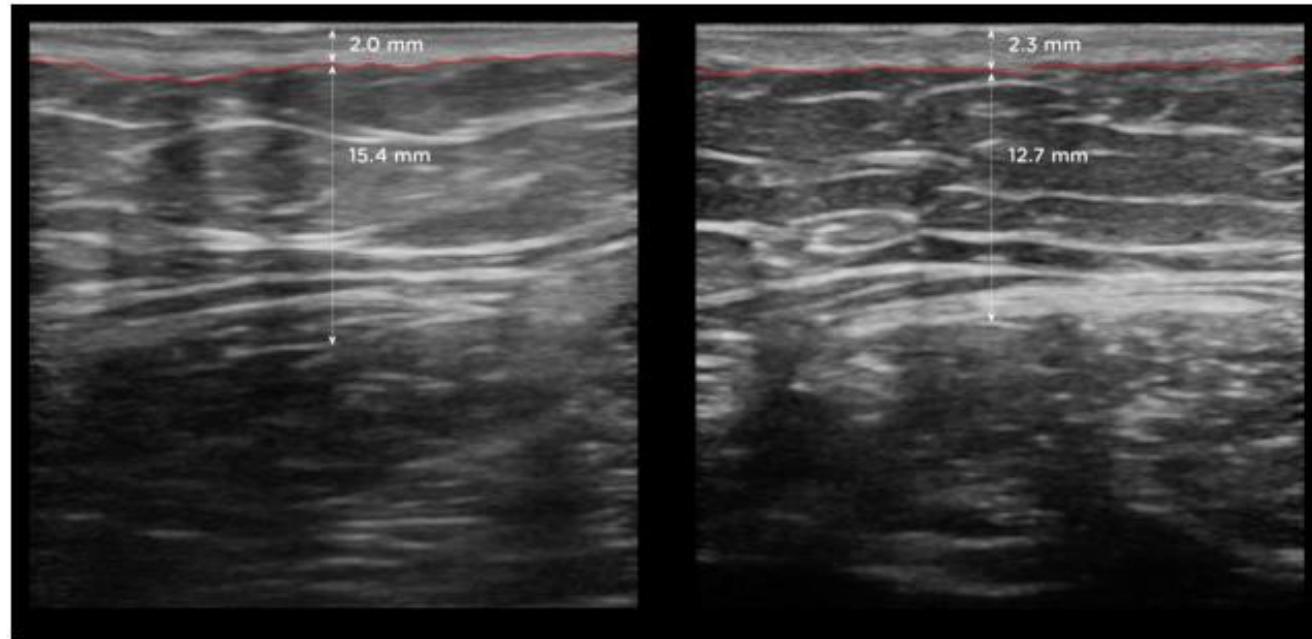


FIGURE 1 Ultrasonography showing changes in dermal and subdermal tissues before (left) and 3 months posttreatment (right)

Ultrasonografia mostrou **aumento da espessura da pele, redução** da camada de gordura e **suavização** da linha de separação da derme e hipoderme.

TERMOGRAFIA – homogeneidade do suporte sanguíneo

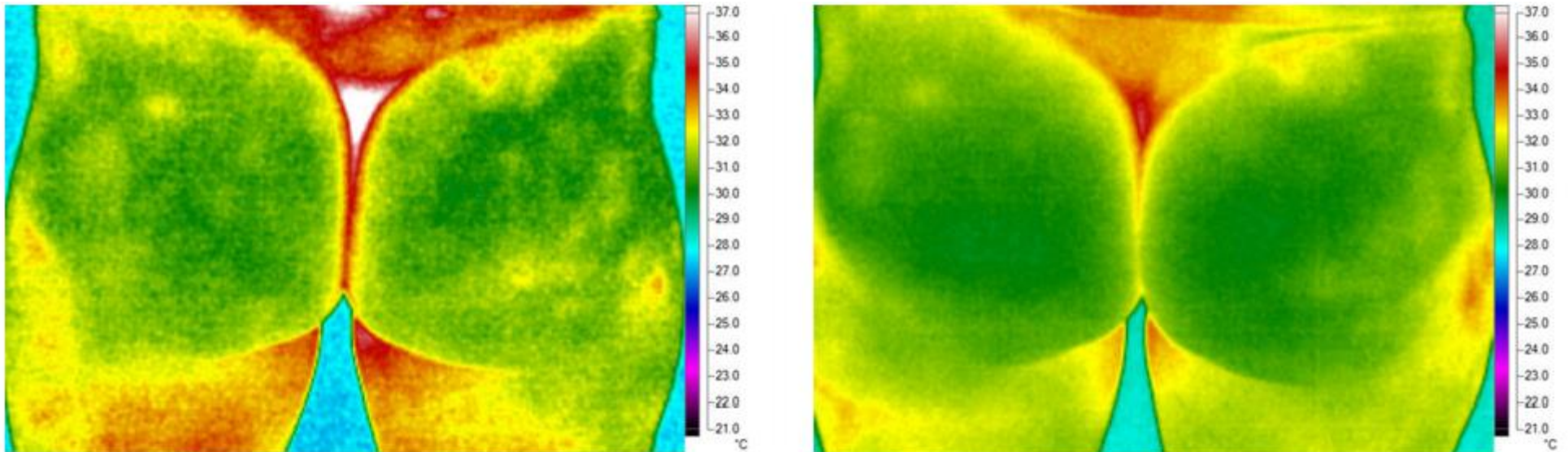


FIGURE 2 Thermography showing changes in the thermal profile before and 3 months posttreatment

Termografia mostrou aumento do suporte sanguíneo e aumento da homogeneidade.

MEDIDA circunferência

TABLE 2 Circumferential measurements and ultrasonography results

Measurement	Baseline	Follow-up	Difference	P-value
Hip circumference (cm; n = 30)	105.3 ± 8.4	103.0 ± 8.6	-2.3 ± 1.6	<.001
Thigh circumference (cm; n = 30)	63.9 ± 6.9	61.8 ± 6.9	-2.1 ± 1.7	<.001
Thickness of dermis (mm; n = 5)	2.0 ± 0.2	2.3 ± 0.2	0.3 ± 0.1	<.05
Thickness of subcutaneous tissue (mm; n = 5)	21.5 ± 2.7	19.5 ± 4.7	-2.0 ± 1.6	<.05

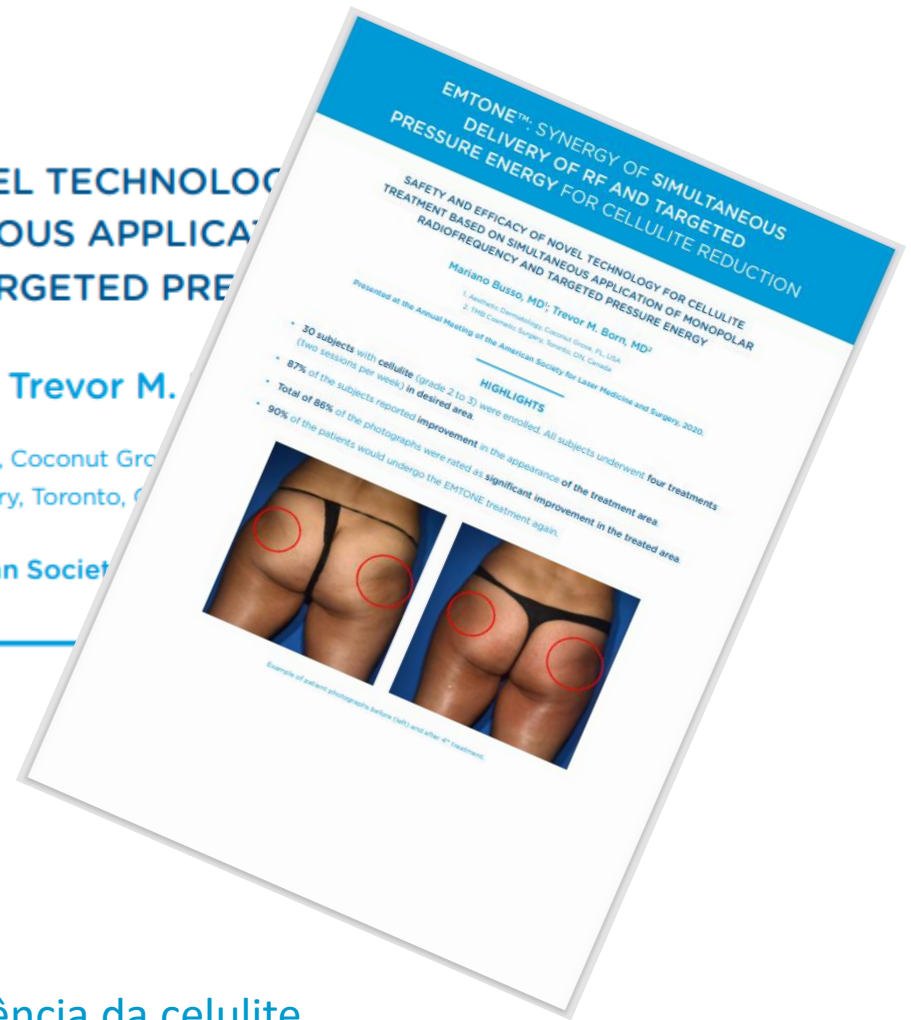
2.2 cm

SAFETY AND EFFICACY OF NOVEL TECHNOLOGY TREATMENT BASED ON SIMULTANEOUS APPLICATION OF RADIOFREQUENCY AND TARGETED PRESSURE ENERGY

Mariano Busso, MD¹; Trevor M. Born, MD²

1. Aesthetic Dermatology, Coconut Grove, FL, USA
2. TMB Cosmetic Surgery, Toronto, ON, Canada

Presented at the Annual Meeting of the American Society for Laser Medicine and Surgery, 2020.



30 sujeitos – celulite grau 3 e 4

4 sessões – 1/semana

87% sujeitos reportaram melhora na aparência da celulite

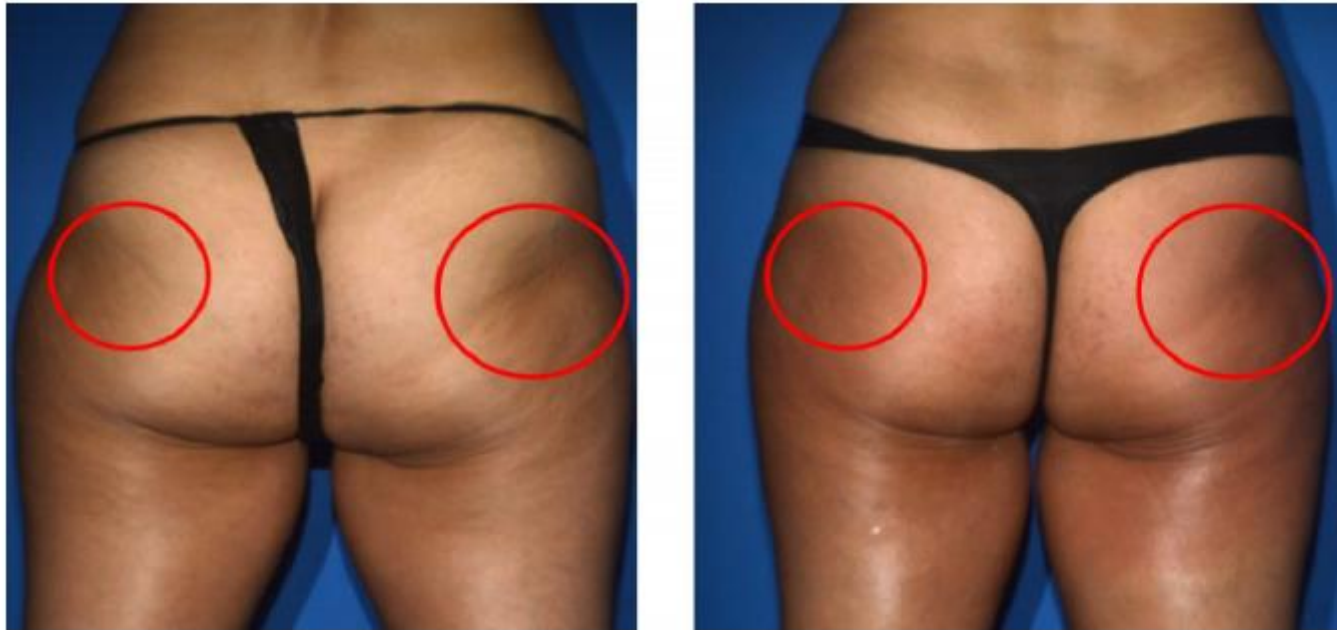
86% das fotografias foram classificadas como melhora significativa da celulite

90% pacientes repetiriam o tratamento com EMTONE.



SAFETY AND EFFICACY OF NOVEL TECHNOLOGY FOR CELLULITE
TREATMENT BASED ON SIMULTANEOUS APPLICATION OF MONOPOLAR
RADIOFREQUENCY AND TARGETED PRESSURE ENERGY

Mariano Busso, MD¹; Trevor M. Born, MD²



Example of patient photographs before (left) and after 4th treatment.

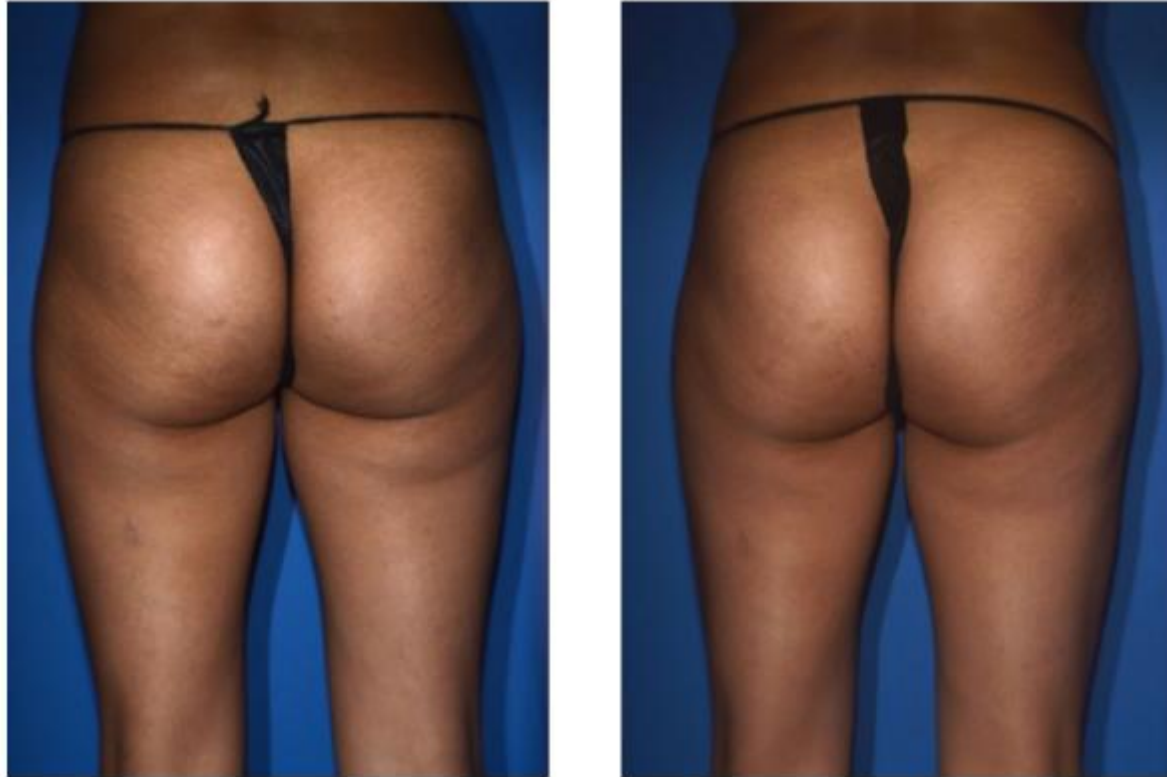


EMTONE[®]

BTLAESTHETICS.COM

SAFETY AND EFFICACY OF NOVEL TECHNOLOGY FOR CELLULITE
TREATMENT BASED ON SIMULTANEOUS APPLICATION OF MONOPOLAR
RADIOFREQUENCY AND TARGETED PRESSURE ENERGY

Mariano Busso, MD¹; Trevor M. Born, MD²



Example of patient photographs before (left) and after 4th treatment.



SAFETY AND EFFICACY OF NOVEL TECHNOLOGY FOR CELLULITE
TREATMENT BASED ON SIMULTANEOUS APPLICATION OF MONOPOLAR
RADIOFREQUENCY AND TARGETED PRESSURE ENERGY

Mariano Busso, MD¹; Trevor M. Born, MD²

BASELINE



1 MONTH FU



Example of patient photographs before (left) and after 4th treatment.



EMTONE[®]

BTLAESTHETICS.COM

REDUCTION OF ABDOMINAL SKIN LAXITY IN WOMEN POST VAGINAL DELIVERY USING THE SYNERGISTIC EMISSION OF RADIOFREQUENCY AND TARGETED PRESSURE ENERGIES.

Prof. Klaus Fritz M.D., Prof. Carmen Salavastru, M.D., Magdalena Gyurova M.D.

43 pacientes, 4 sessões, 3 meses follow-up.

91%

Pacientes mostraram melhora da viscoelasticidade

86%

Melhora visível da elasticidade da pele

1.43 cm

Média de redução circunferência

90%

Satisfação dos pacientes com os resultados



EMTONE®

BTLAESTHETICS.COM

FLACIDEZ ABDOMINAL MULHERES PÓS PARTO

REDUCTION OF ABDOMINAL SKIN LAXITY IN WOMEN POST VAGINAL DELIVERY USING THE SYNERGISTIC EMISSION OF RADIOFREQUENCY AND TARGETED PRESSURE ENERGIES. Prof. Klaus Fritz M.D., Prof. Carmen Salavastru, M.D., Magdalena Gyurova M.D.

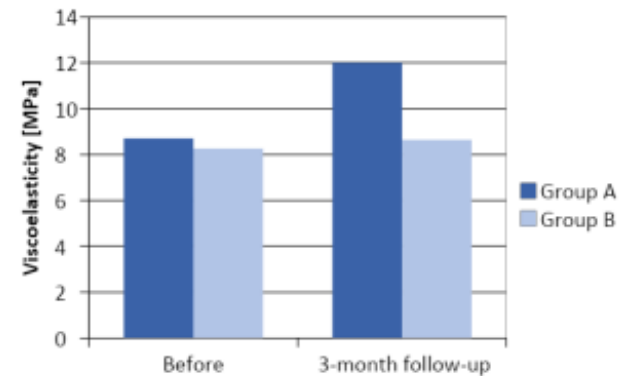
BEFORE



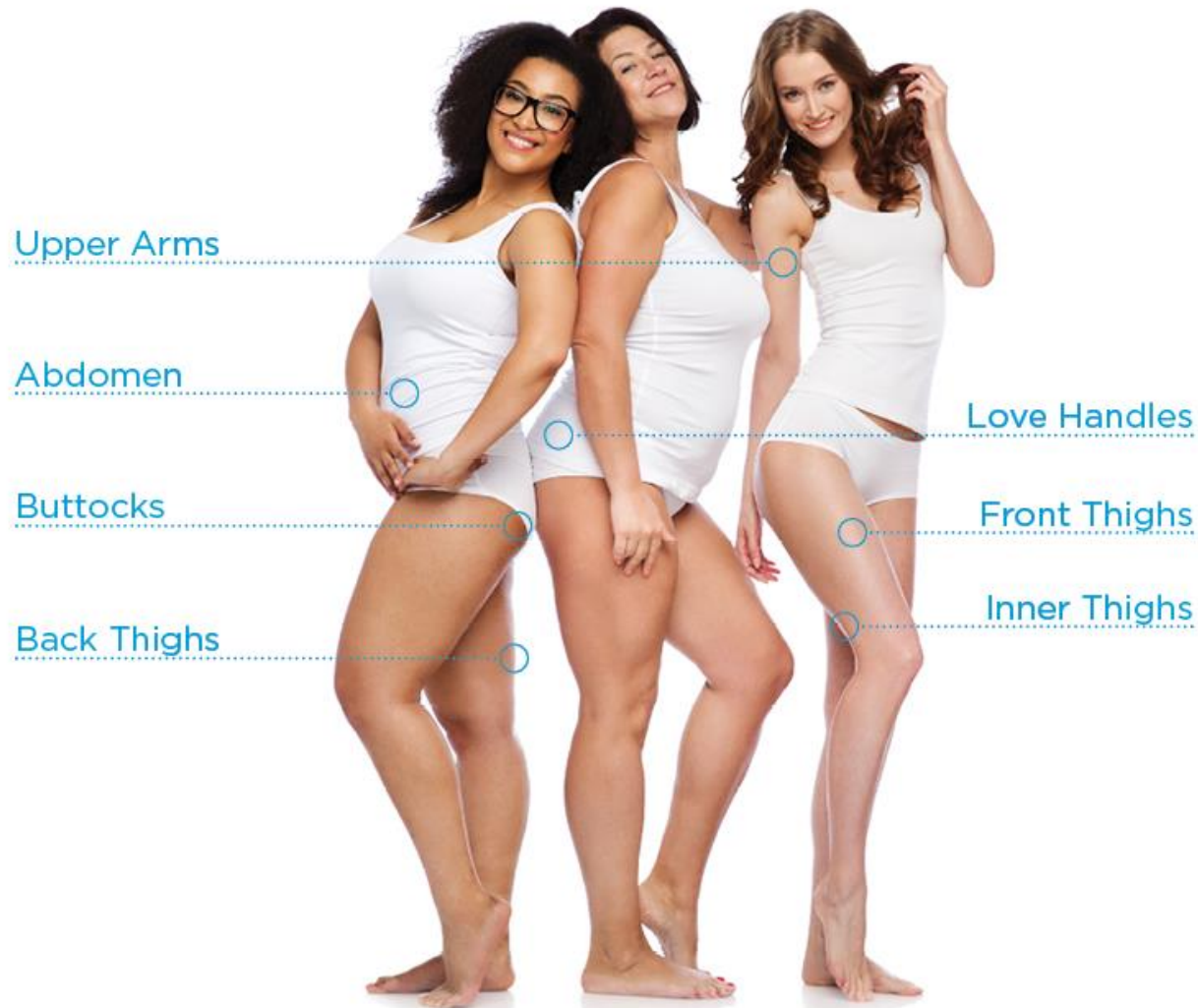
AFTER **BTL UNISON**



3 MONTHS AFTER 4th TREATMENT, COURTESY OF: KLAUS FRITZ, M.D.



EMTONE ÁREAS DE TRATAMENTO



EMTONE®

BTLAESTHETICS.COM

PROTÓCOLO de TRATAMENTO

ÁREAS	TEMPO [min]*	NUMERO DE SESSÕES	FREQUENCIA DE TRATAMENTO
Glúteos	2 x 9	4	1 por semana
Posterior de Coxas	2 x 12	4	1 por semana
Inferior de glúteos + superior da coxa	2 x 12	4	1 por semana
Anterior da Coxa	2 x 12	4	1 por semana
Interno de Coxa	2 x 7	4	1 por semana
Abdomen	15	4	1 por semana
Braços	2 x 5	4	1 por semana
Flancos	2 x 7	4	1 por semana

* O tempo de tratamento pode variar de acordo com o tamanho da área.





EMTONE®

BTLAESTHETICS.COM



EMTONE®

BTLAESTHETICS.COM



EMTONE®

BTLAESTHETICS.COM



Como segurar o aplicador



EMTONE®

BTLAESTHETICS.COM



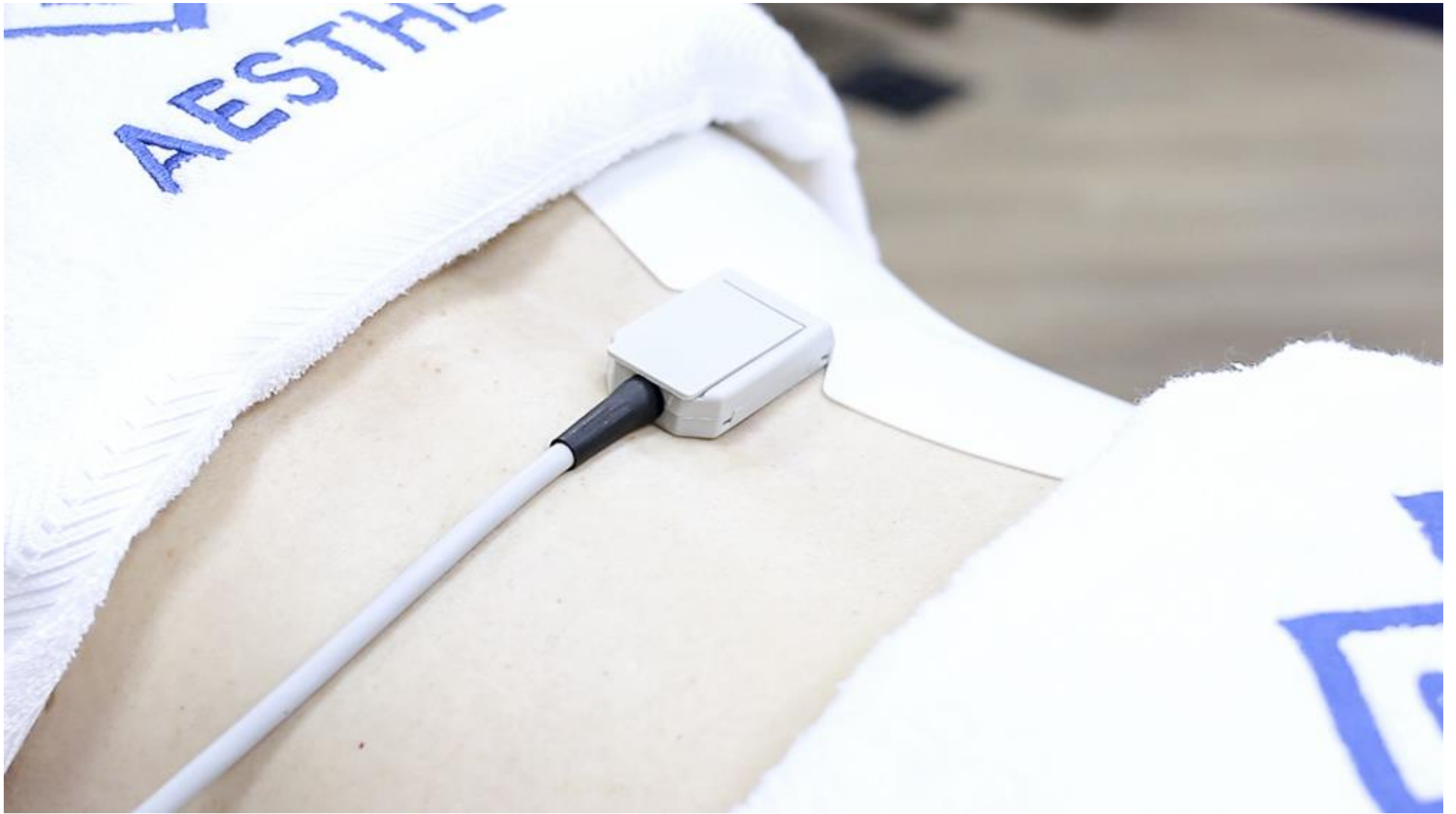
EMTONE®

[BTLAESTHETICS.COM](https://www.btl.aesthetics.com)



EMTONE®

BTLAESTHETICS.COM



EMTONE®

BTLAESTHETICS.COM



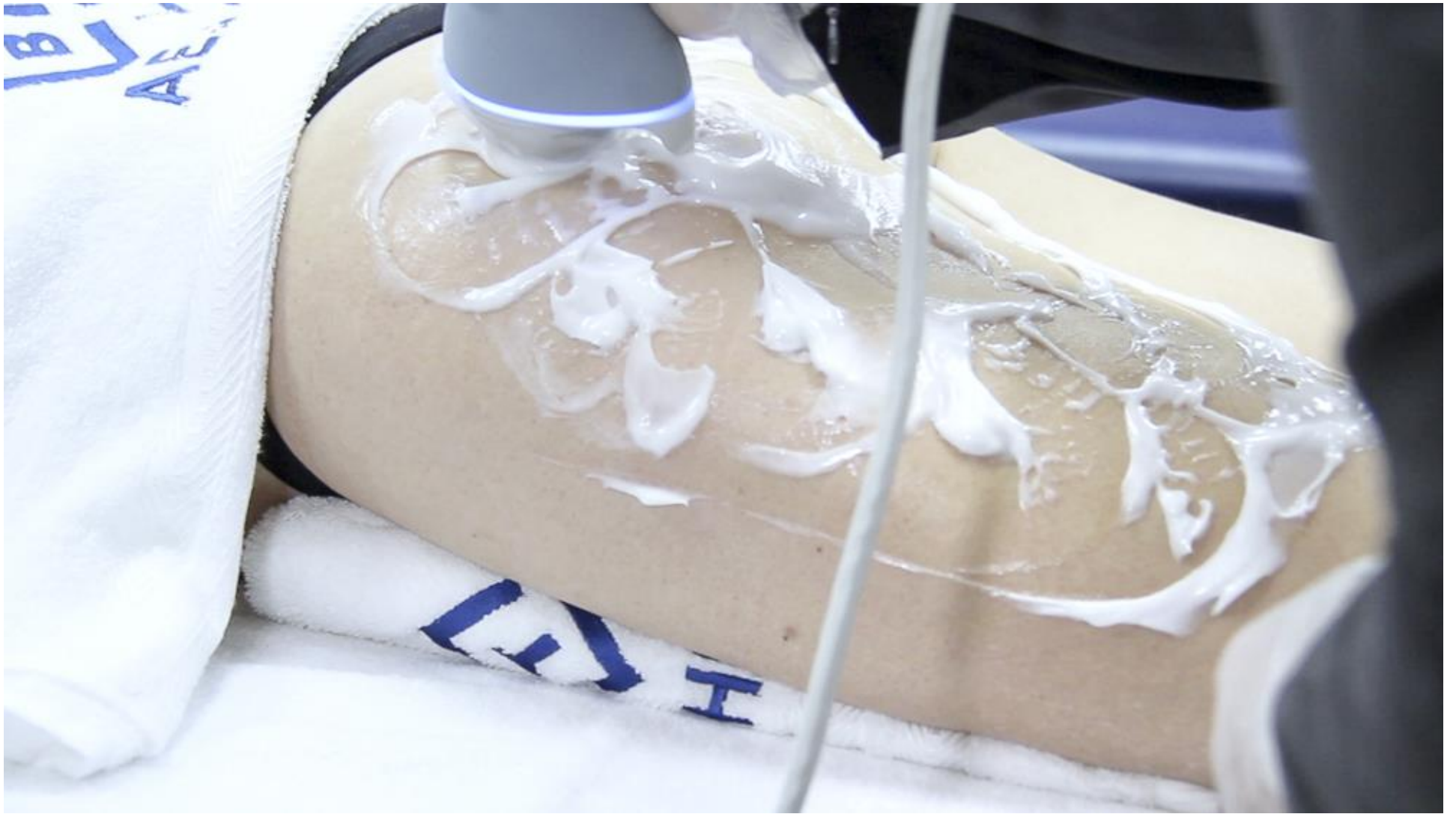
EMTONE®

BTLAESTHETICS.COM



EMTONE®

BTLAESTHETICS.COM



EMTONE®

BTLAESTHETICS.COM



EMTONE®

BTLAESTHETICS.COM

BEFORE & AFTER

BEFORE



AFTER **EMTONE**



3 MONTHS AFTER 4th TREATMENT, COURTESY OF: BTL AESTHETICS



EMTONE[®]

BTLAESTHETICS.COM

BEFORE & AFTER

BEFORE



AFTER **EMTONE**



AFTER 4th TREATMENT, COURTESY OF: TANIA RASHID



EMTONE®

BTLAESTHETICS.COM

BEFORE & AFTER

BEFORE



AFTER **EMTONE**



3 MONTHS AFTER 4th TREATMENT, COURTESY OF: TANIA RASHID



EMTONE®

BTLAESTHETICS.COM

BEFORE & AFTER

BEFORE



AFTER **EMTONE**



AFTER 4th TREATMENT, COURTESY OF: MARC SALZMAN, M.D.



EMTONE[®]

BTLAESTHETICS.COM

BEFORE & AFTER

BEFORE



AFTER **EMTONE**



AFTER 3rd TREATMENT, COURTESY OF: GIULIA BIANCHI, M.D.



EMTONE®

BTLAESTHETICS.COM

ANTES & DEPOIS

Cortesia da BTL



Antes

3 meses de follow-up após 4 sessões



EMTONE®

BTLAESTHETICS.COM

ANTES & DEPOIS

Courtesia de Natalie Dryden, UK



Antes

3 meses de follow-up após 4 sessões



EMTONE®

BTLAESTHETICS.COM

BEFORE



AFTER **EMTONE**



AFTER 3rd TREATMENT, COURTESY OF: TOM PARMAKELLIS, M.D.

Después del tercer tratamiento, cortesía del Dr. Tom Parmakellis



EMTONE[®]

BTLAESTHETICS.COM

BEFORE



AFTER **EMTONE**



AFTER 3rd TREATMENT, COURTESY OF: TOM PARMAKELLIS, M.D.



EMTONE[®]

BTLAESTHETICS.COM



Después del tercer tratamiento, cortesía del Dr. Tom Parmakellis



EMTONE®

BTLAESTHETICS.COM



Combinação: Sculptra/Emsculpt/Emtone, cortesia de Dra. Gina Messiha



EMTONE®

BTLAESTHETICS.COM



Tratamiento unilateral , cortesía de la Dra. Anh Nguyen



EMTONE®

BTLAESTHETICS.COM

BEFORE & AFTER

BEFORE

AFTER **EMTONE**



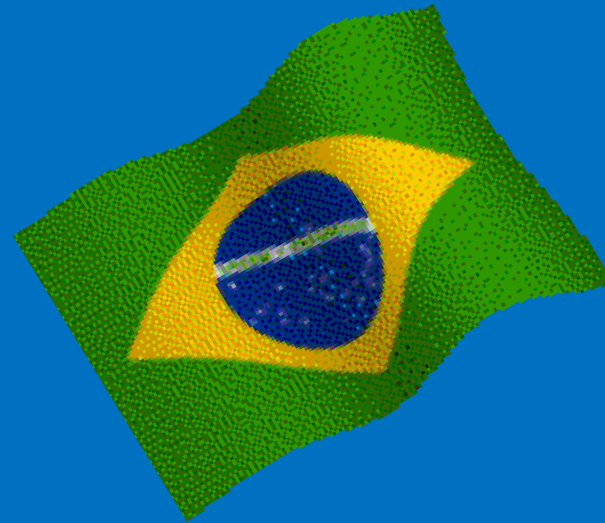
3 MONTHS AFTER 4th TREATMENT, COURTESY OF: BTL AESTHETICS



EMTONE[®]

BTLAESTHETICS.COM

EMTONE®



EMTONE®

BTLAESTHETICS.COM



DERMATOLOGIA E
CIRURGIA PLÁSTICA



DERMATOLOGIA E
CIRURGIA PLÁSTICA



EMTONE®

BTLAESTHETICS.COM



DERMATOLOGIA E
CIRURGIA PLÁSTICA



EMTONE®

BTLAESTHETICS.COM



DERMATOLOGIA E
CIRURGIA PLÁSTICA



EMTONE®

BTLAESTHETICS.COM



DERMATOLOGIA E
CIRURGIA PLÁSTICA



EMTONE®

BTLAESTHETICS.COM



VR DERMATOLOGIA E
CIRURGIA PLÁSTICA



EMTONE®

BTLAESTHETICS.COM



 DERMATOLOGIA E
CIRURGIA PLÁSTICA



EMTONE®

BTLAESTHETICS.COM



 DERMATOLOGIA E
CIRURGIA PLÁSTICA



EMTONE®

BTLAESTHETICS.COM



DERMATOLOGIA E
CIRURGIA PLÁSTICA



EMTONE®

BTLAESTHETICS.COM



DERMATOLOGIA E
CIRURGIA PLÁSTICA



EMTONE®

BTLAESTHETICS.COM



CLÍNICA JEREZ
DERMATOLOGIA



1SS

4SS



EMTONE®

BTLAESTHETICS.COM



CLÍNICA JEREZ
DERMATOLOGIA



1SS

4SS

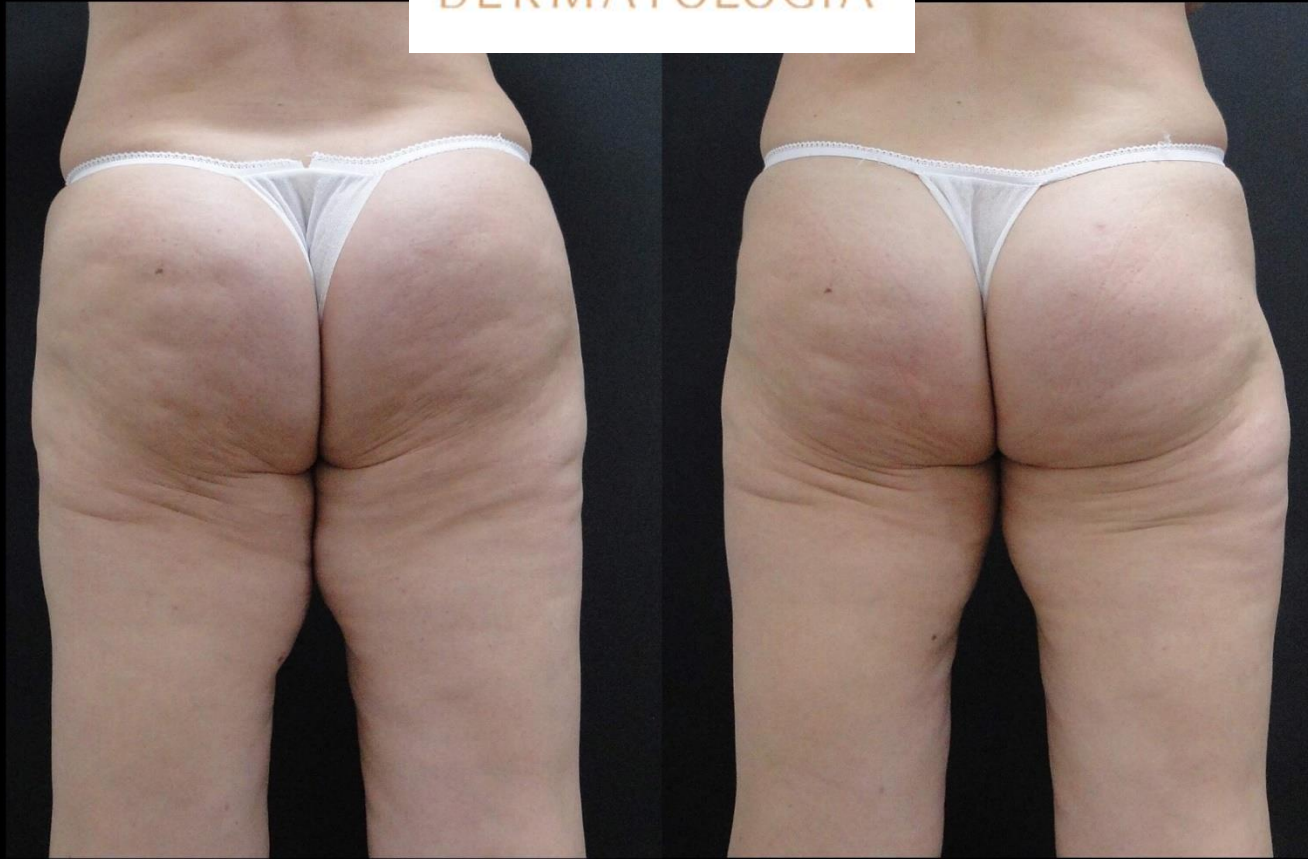


EMTONE®

BTLAESTHETICS.COM



CLÍNICA JEREZ
DERMATOLOGÍA



1SS

Pós 30



EMTONE®

BTLAESTHETICS.COM



CLÍNICA JEREZ
DERMATOLOGÍA



1SS

4SS



EMTONE®

BTLAESTHETICS.COM



CLÍNICA JEREZ
DERMATOLOGÍA



1SS

4SS



EMTONE®

BTLAESTHETICS.COM



CLÍNICA JEREZ
DERMATOLOGIA



1* sessão

4* sessão



EMTONE®

BTLAESTHETICS.COM



CLÍNICA JEREZ
DERMATOLOGÍA



1*

4*



EMTONE®

BTLAESTHETICS.COM



CLÍNICA JEREZ
DERMATOLOGIA



1SS

4SS



EMTONE®

BTLAESTHETICS.COM

AH
ALESSANDRA HADDAD



EMTONE®

BTLAESTHETICS.COM



IR INSTITUTO RAUEN
Medicina, Saúde e Bem-Estar



EMTONE®

BTLAESTHETICS.COM



IR INSTITUTO RAUEN
Medicina, Saúde e Bem-Estar



EMTONE®

BTLAESTHETICS.COM



ALEXANDRE FERREIRA
ENDOCRINOLOGIA



Antes

Depois



EMTONE®

BTLAESTHETICS.COM



ALEXANDRE FERREIRA
ENDOCRINOLOGIA



ANTES



DEPOIS



EMTONE®

BTLAESTHETICS.COM



ALEXANDRE FERREIRA
ENDOCRINOLOGIA



ANTES

DEPOIS



EMTONE®

BTLAESTHETICS.COM

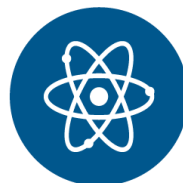
EMTONE BENEFÍCIOS



5 CAUSAS DA CELULITE



ENERGIA TÉRMICA E MECANICA



PODER DE SINERGIA



SEM DOWNTIME



TODOS OS TIPOS DE CELULITE



TODOS OS CORPOS E TODOS OS TIPOS DE PELE



DEMANDA PROMISSORA



NÃO INVASIVO



PODE SER DELEGADO



EMTONE®

BTLAESTHETICS.COM

EMTONE no mercado

9 de 10 mulheres tem celulite

61% delas buscam tratamento segundo o realself

+ 500 equipamentos pelo mundo

EMTONE foi o número 1 em maior crescimento de visualização do Realself desde março até outubro 2020

89% dos pacientes disseram – Isso funciona!!



EMTONE®

BTLAESTHETICS.COM

EMTONE[®]

PERGUNTAS?



EMTONE[®]

BTLAESTHETICS.COM