

# EXION™

## CLINICAL TRAINING PRESENTATION



One Platform Endless Possibilities

EXION™

# 5 UNIQUE EXION PROCEDURES



**Fractional RF**



**Clear RF**



**Face**



**Body**



**EMFEMME 360®**



**One Platform Endless Possibilities**

**EXION™**

# EXION™ Fractional RF

**BREAKTHROUGH MICRONEEDLING RF**

**FOR LESS PAIN, MORE GAIN  
AND SINGLE PASS**



**One Platform Endless Possibilities**

**EXION™**

# EXION **Clear RF**<sup>™</sup>

**SMART MICROABLATION FOR SKIN  
PERFECTION**

**FOR QUICK, LASER-LIKE PROCEDURE  
WITH MINIMAL DOWNTIME**



**One Platform Endless Possibilities**

**EXION<sup>™</sup>**

# EXION™ **Face**

**HYALURONIC ACID NATURALLY**

**THE FIRST NON-INVASIVE  
TECHNOLOGY TO BOOST  
HYALURONIC ACID PRODUCTION**



**One Platform Endless Possibilities**

EXION™

# EXION™ **Body**

**SKIN & LOCALIZED FAT**

**RF & TARGETED ULTRASOUND WITH  
POWERFUL COOLING**

**FOR SKIN LAXITY AND LOCALIZED FAT**



One Platform Endless Possibilities

EXION™

# EMFEMME 360<sup>®</sup>

THE SHORTEST INTIMATE RF TREATMENT

UNIQUE 360° RF TECHNOLOGY  
FOR FAST AND COMFORTABLE  
INTIMATE TREATMENT



One Platform Endless Possibilities

EXION™

# ONE PLATFORM ENDLESS POSSIBILITIES



**EXION™ Clear RF**  
Smart **Microablation**  
for **Skin Perfection**



**EXION™ Fractional RF**  
Breakthrough  
**Microneedling RF**



**EXION™ Face**  
Hyaluronic Acid  
**Naturally**



**EXION™ Body**  
Skin &  
**Localized Fat**



**EMFEMME 360™**  
The **Shortest Intimate**  
**RF Treatment**



One Platform Endless Possibilities

EXION™

# EXION™

## CONTRAINDICATIONS, WARNINGS AND PRECAUTIONS



One Platform Endless Possibilities

EXION™

# GENERAL CONTRAINDICATIONS

- Bacterial or viral infection, acute inflammations
- Impaired immune system
- Isotretinoin in the past 12 months
- Skin-related autoimmune diseases
- Radiation therapy and chemotherapy
- Poor healing and unhealed wounds in the treatment area
- Metal implants near the treatment area or neutral electrode
- Permanent implant near the treatment area
- Pacemaker or internal defibrillator, or any other active electrical implant anywhere in the body
- Current condition or history of skin cancer, or current condition of any other type of cancer, or pre-malignant moles
- History of any type of malignant cancer
- Active collagen diseases
- Cardiovascular diseases (such as vascular diseases, peripheral arterial disease, thrombophlebitis and thrombosis)
- Pregnancy/nursing or IVF procedure
- History of bleeding coagulopathies, use of anticoagulants
- Any active condition in the treatment area, such as sores, psoriasis, eczema, rash and rosacea
- Any surgical procedure in the treatment area within the last three months or before complete healing
- Poorly controlled endocrine disorders, such as diabetes
- Tuberculosis
- Hepatitis
- Febrile conditions

For the full range of contraindications, warnings and cautions, refer to the Operator's Manual



One Platform Endless Possibilities

EXION™

# Applicator Specific Contraindications

## FRACTIONAL RF APPLICATOR

(Fractional RF and Clear RF procedures)

- History of skin disorders, keloids, very dry and fragile skin
- Excessively tanned skin from sun, tanning beds or tanning creams within the last two weeks
- Neurotoxin/collagen/fat injections or other injected bio-material in the treated area within three months prior to the treatment
- Use of non-steroidal anti-inflammatory drugs one week before and after each treatment session
- Treating over tattoo or permanent makeup
- Treating over eyelids or the lips



For the full range of contraindications, warnings and cautions, refer to the Operator's Manual



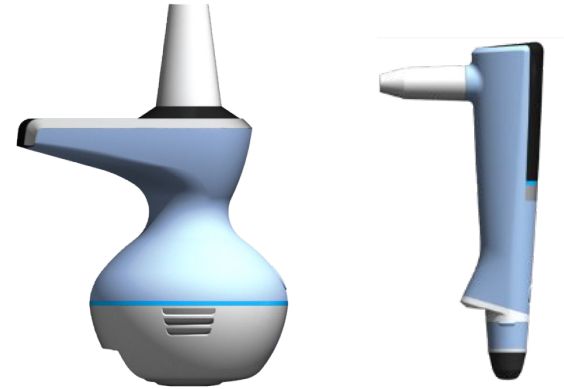
One Platform Endless Possibilities

EXION™

# Applicator Specific Contraindications

## EXION FACE & BODY APPLICATORS

- Acute neuralgia and neuropathy
- Kidney or liver failure
- Sensitivity disorders in the treatment area
- Varicose veins, pronounced edemas
- Skin dermabrasion, skin resurfacing, or deep chemical peeling in the treatment area within 3 months prior to the treatment



For the full range of contraindications, warnings and cautions, refer to the Operator's Manual



One Platform Endless Possibilities

EXION™

# Applicator Specific Contraindications

## EMFEMME 360° APPLICATOR

- Acute neuralgia and neuropathy
- Kidney or liver failure
- Sensitivity disorders in the treatment area
- Varicose veins, pronounced edemas
- Menstruation
- Postpartum period
- Sexually transmitted infection
- Pelvic organ prolapse beyond the hymenal ring and evidence of fine rectovaginal septum
- Undergoing pelvic floor physiotherapy
- Skin dermabrasion, skin resurfacing, or deep chemical peeling in the treatment area within 3 months prior to the treatment



For the full range of contraindications, warnings and cautions, refer to the Operator's Manual



One Platform Endless Possibilities

EXION™

# POSSIBLE SIDE EFFECTS

## FRACTIONAL RF APPLICATOR (Fractional RF and Clear RF procedures)

- Intense heating sensation during or just following the treatment.
- Pain. It is expected to resolve within a few minutes. Topical or local anesthetics are recommended to minimize treatment discomfort. Anesthetic should be used according to manufacturer guidelines.
- Bleeding at contact locations several seconds following withdrawal of the applicator.
- Erythema and edema in the treated area, which often disappears within 24 hours.
- Itching and irritation in the treated area, which often disappears within 24 hours.
- Visibility of small crusts, blisters or burns occasionally develop at contact locations. These typically slough within one week for sensitive skin.
- Discomfort/sensitivity to firm tissue palpation in the treatment area. It may persist for 14 days.
- Pigmentation change, including hypopigmentation, hyperpigmentation and post-inflammatory hyperpigmentation.
  - It is more likely to occur for patients with Skin Type V and VI for whom particular caution is advised during treatment.
  - At energy levels greater than 62mj/pin (40% for Fractional RF tips, 70% for Clear RF 64 tip), use of the EXION Fractional RF applicator is limited to Skin Types I-IV.



For the full range of contraindications, warnings and cautions, refer to the Operator's Manual



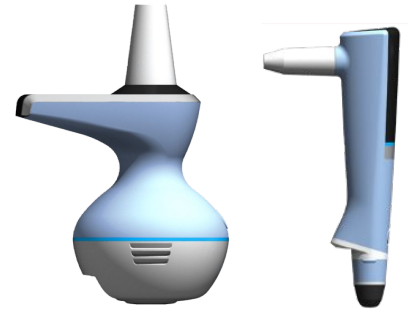
One Platform Endless Possibilities

EXION™

# POSSIBLE SIDE EFFECTS

## EXION BODY & EXION FACE APPLICATORS

- Erythema (redness) and mild swelling in the treated area. Both will likely disappear within 2 to 24 hours.
- Heating sensation during or just following the treatment.
- Dry skin in the treated area during the first 12 post-treatment hours. It usually resolves within 48 hours.
- Temporary damage to natural skin texture (crust, blister, and burn).



For the full range of contraindications, warnings and cautions, refer to the Operator's Manual

One Platform Endless Possibilities



EXION™

# POSSIBLE SIDE EFFECTS

## EMFEMME 360° APPLICATOR

- Increased vaginal lubrication
- Slightly elevated white discharge
- Focal, transient “altered sensation” and “tingling” following treatment
- In rare cases patient could develop an infection requiring antibiotics.
- Although no permanent complications have been reported, is a remote possibility of damage to the urethra or rectum.
- Light spotting/bleeding and mild cramping, which should resolve in 24 hours.



For the full range of contraindications, warnings and cautions, refer to the Operator's Manual



One Platform Endless Possibilities

EXION™

# For the full range of contraindications, warnings and cautions, refer to the Operator's Manual

The information provided in this presentation is not intended to replace operator's professional knowledge, experience, or training regarding the clinical use of the device.



EXION™

**ACCESSORIES**



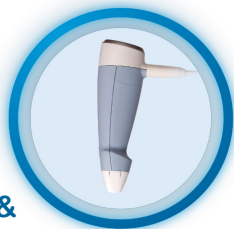
One Platform Endless Possibilities

EXION™

# UNIT & APPLICATORS

## EXION Fractional RF applicator

(with Fractional RF microneedle & Clear RF tips)



## EXION Body applicator



## EXION Face applicator



## EMFEMME 360 applicator



EXION unit



One Platform Endless Possibilities

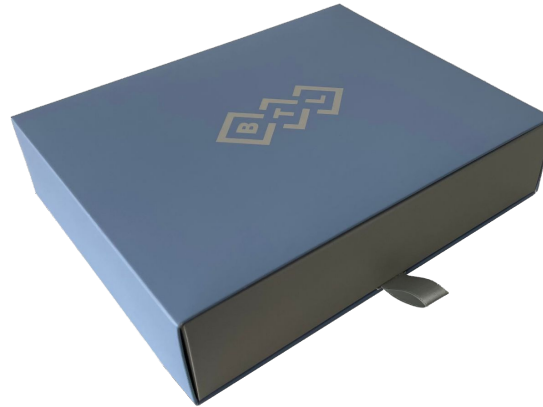
EXION™

# FRACTIONAL RF treatment

- Microneedle Insulated and Non-insulated tips
- Tips are single use (lifetime 1000 shots)
- Neutral electrode



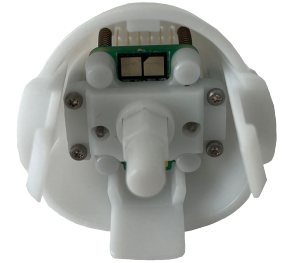
Grounding pad (box of 25)  
Same as for EMFACE/EMTONE



Box of 10pcs



Non-Insulated tip



Insulated tip

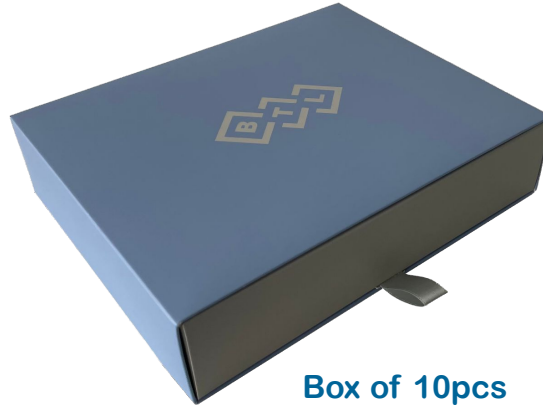


# CLEAR RF treatment

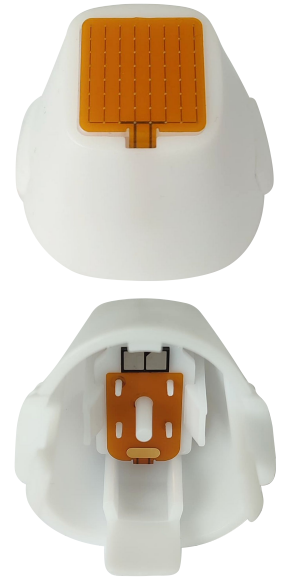
- EXION Clear RF 64 tips
- Tips are single use (lifetime 800 shots)
- Neutral electrode



Grounding pad (box of 25)  
Same as for EMFACE/EMTONE



Box of 10pcs



Clear RF 64 tip



# Face & Body treatments

- Ultrasound gel (Face applicator)
- Mineral Oil (Body applicator)
- Grounding pad



Grounding pad (box of 25)  
Same as for EMFACE/EMTONE



Mineral Oil



Ultrasound gel



One Platform Endless Possibilities

EXION™

# EMFEMME 360 treatment

- Single use tips
- Packed in boxes of 5 pcs
- Neutral electrode
- Ultrasound gel



Grounding pad (box of 25)  
Same as for EMFACE/EMTONE



V-30 tip



V-24 tip



V-tip



Ultrasound gel



One Platform Endless Possibilities

EXION™

# TREATMENT

## GENERAL RECOMMENDATIONS



One Platform Endless Possibilities

EXION™

# PRE-TREATMENT INFORMATION

## DURING THE FIRST VISIT, THE OPERATOR SHOULD:

- Take a detailed patient case-history, including previous treatment modalities, and examine the patient's general suitability for the treatment.
- Determine why the patient is seeking treatment and understand their expectations.
- Discuss the treatment regimen with the patient.
- Inquire for contraindications.
- Fill out the consent form.



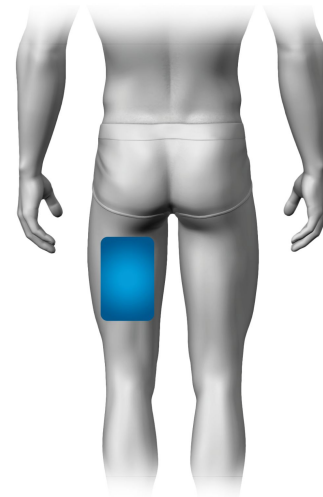
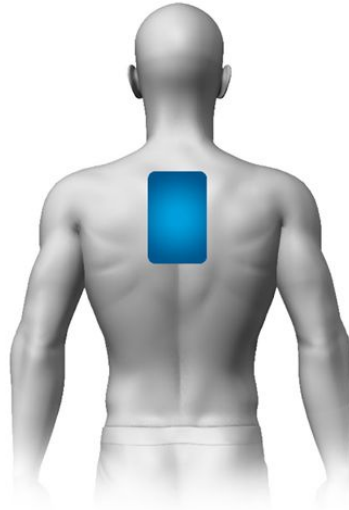
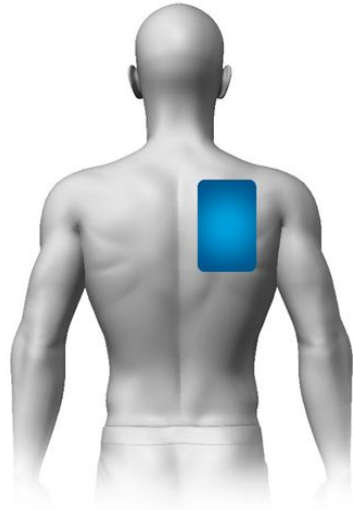
# NEUTRAL ELECTRODE PLACEMENT

## TO PLACE THE NEUTRAL ELECTRODE ON THE PATIENT'S SKIN:

- Locate the electrode on the patient's back. Never locate the electrode across the spine. Alternatively, place the electrode on the back thigh.
- Place the electrode on clean skin. The whole surface of the electrode must be in contact with the skin. To assure complete contact, rub the electrode on the skin for several seconds.
- Connect the connector of the neutral electrode to the main unit.
- Insufficient contact is indicated by an audible signal. Press the electrode firmly against the tissue surface to achieve better contact. Alternatively, clean the surface under the electrode more thoroughly, or replace the electrode.
- Do not remove the electrode during the treatment.
- The quality of electrode adhesion is indicated on the main screen. Improper contact quality of the neutral electrode is indicated on the applicator by flashing red light of illuminated tip and by high pitched audio signal.



# NEUTRAL ELECTRODE PLACEMENT



# TREATMENTS

## FRACTIONAL RF APPLICATOR

**Fractional RF**



**Clear RF**



**One Platform Endless Possibilities**

**EXION™**

# SAFETY PRECAUTIONS AND WARNINGS



Never use the disposable tips if the packaging or the tip itself appears damaged.

All tips are single use only!

# TREATMENT PREPARATION

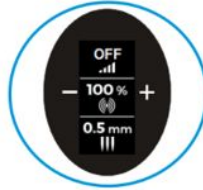
- Patient should be instructed to discontinue any irritant topical agents for 2-3 days prior to treatment.
- Remove any jewelry from the treatment area.
- The treatment area should be free from hair. Shave the treatment area if necessary.
- Clean the skin to remove any makeup or other cosmetics.
- Patient's Fitzpatrick skin type should be always considered when selecting the applicator tip.
- Apply anesthetic when needed.
- Post anesthesia, wipe off the anesthetic with a dry gauze pad and wash the treatment area thoroughly. Ensure that all anesthetic has been removed and the skin is dry.
- Clean the skin with 70% alcohol and allow it to dry thoroughly before operating the equipment.



# FRACTIONAL RF APPLICATOR SET-UP

## INTUITIVE TOUCH SCREEN

Allows to adjust the setting right on the applicator's display



## AI PULSE CONTROL

Based on changing impedance the AI algorithm adjusts RF power, pulse duration or delivery speed to ensure consistent energy delivery



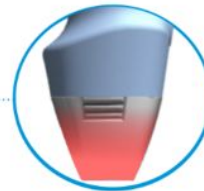
## PLUG & PLAY TIPS

Enable connecting three tip types according to patient's needs:  
Fractional RF microneedles or Clear RF 64 tips



## VISUAL CONTROL SYSTEM

Light guide changes frequency and color of blinking according to current treatment state



One Platform Endless Possibilities

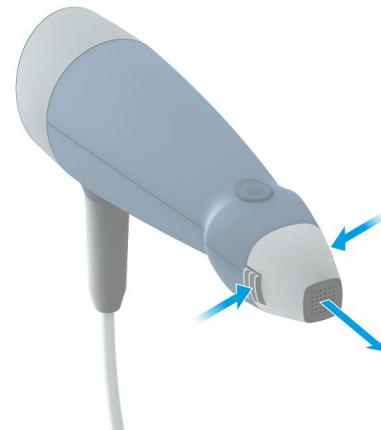
EXION™

# ATTACHING/DETACHING THE TIP



## ATTACHING THE TIP

Attach the tip in the direction so that the middle protrusion on the tip follows the middle gap on the applicator. Keep pressing the grooved grips.



## DETACHING THE TIP

Remove the tip by pressing both grooved grips and pulling it out of the applicator. Disposable tip has a pulse limit (Fractional RF tips 1000 pulses, Clear RF 64 tip 800 pulses) after which a replacement is necessary.

Disposable tips are for single use only. They must be discarded and replaced by a new one after each treatment to prevent cross contamination between patients.



# SELECTING TREATMENT PARAMETERS

- Parameters' settings should be individually evaluated by the operator based on the treatment area and on the patient's medical and wound healing history.
- The choice of treatment parameters should take into consideration the diffusion and depth of the treated region, as well as its specific anatomical location such as proximity to bone.
- Choose an appropriate spot on patient's body for test shots to observe patient's skin reaction.



# TREATMENT TECHNIQUE

- No lotion, gel or coupling medium should be used during the treatment.
- Set the treatment parameters. Choose an appropriate spot on patient's body for test shots to observe patient's skin reaction.
- Assure the applicator tip is in full contact with the skin. Apply a proper pressure to the skin while administering the shots.
- The radiofrequency emission is indicated by an audio signal and a blue flash light of the illuminated tip. If the tip flashes red, radiofrequency wasn't delivered and pulse should be repeated.
- Place each pulse directly next to the previous one. Aim for an overlap of about 25% between each pulse to adequately cover the border of the applicator.
- Adjust the treatment parameters according to patient's condition and feedback.
- Ensure clean tips; accumulated debris or non-dry skin may impact the treatment.



# CLEANING THE TIP DURING TREATMENT

- Always ensure that the tips are clean; accumulated debris or non-dry skin may impact the treatment.
- If you suspect the presence of impurities (due to the smell of burns or unexpected behavior), press the Cleaning mode button.
- In Cleaning mode, pressing the trigger button won't release the energy.



CLEANING MODE BUTTON

## Fractional RF Microneedle tips:

- Push and hold the trigger button to eject the needles to their maximum length. Visually check the cleanliness of the needles. When the button is released, the needles automatically retract.
- Double press the trigger button to eject the needles into the alcohol prep pad. Automatic retraction of the needles follows. Repeat this step several times until the needles are clean.

## Clear RF 64 tip:

- Place and rub an alcohol prep pad over the surface of the tip until the pins are clean.
- Always clean the tip in the presence of debris or other impurities when the device is in Cleaning mode. Make sure the needles or pins are completely dry before beginning to treat again.



Always clean the tip in the presence of debris or other impurities when the device is in Cleaning mode. Make sure the needles or pins are completely dry before beginning to treat again.



# POST-TREATMENT RECOMMENDATIONS

- The treatment area may be cooled after or during the therapy to reduce the excessive skin response.
- A soothing cream may be applied after therapy.
- Patients should avoid sun exposure or any excessive tanning for several days after the treatment. A broad spectrum UVA/UVB sunblock should be used outdoors during daylight hours until the skin is completely healed.
- Patient should avoid any skin irritation in the treated area for 24 to 48 hours after the therapy.
- Make-up may be applied only 24-72 hours after each treatment session as long as the skin is not broken.
- Generally, 24 hours after treatment, patients may use regular soaps, but not scrub soaps or exfoliates.
- The session should not be repeated until the skin is fully recovered, typically 1 to 6 weeks.



# Fractional RF

## Treatment Specifics



One Platform Endless Possibilities

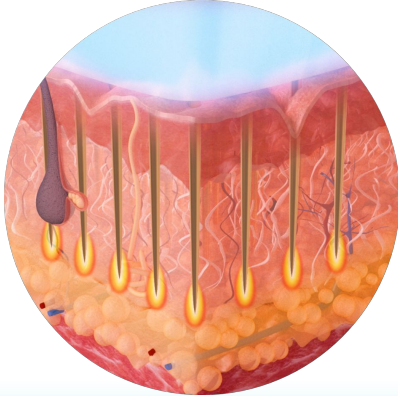
EXION™

# SINGLE USE TIP SELECTION

Suitable for all skin types

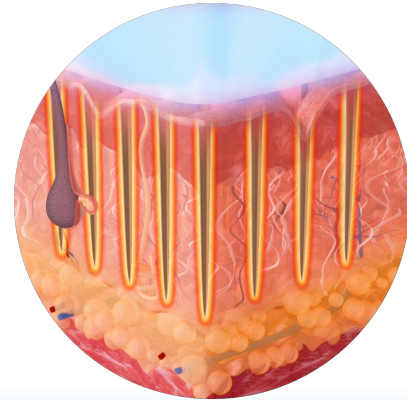
## INSULATED TIPS

- Energy delivered only from the needle tip
- Suitable for skin types I-VI



## NON-INSULATED TIPS

- Energy delivered along the entire needle
- Intended for skin types I-II



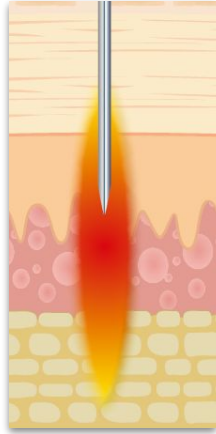
One Platform Endless Possibilities

EXION™

# SELECTING TREATMENT PARAMETERS

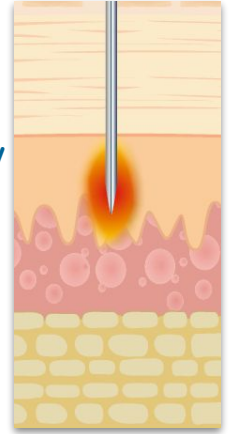
## Extended mode ON

- Ideal for Body & subdermal treatment
- Thermal gradient below needles helps reach greater depths without full needle insertion
- With longer pulse the delivered energy spreads to the subdermal layer
- Ideal for deep tissue structures



## Extended mode OFF

- Ideal for Face & skin treatment
- Energy localized along the needle
- With short pulse the delivered energy cannot spread to surrounding tissue
- Ideal for targeted facial treatment



# SETTINGS RECOMMENDATION

## NON-Insulated Needle Tips

Intended for skin types I-II



Treatment zones	Extended mode	Energy (%)	Needle depth (mm)	Number of treatments	Frequency of treatments* (weeks)
Face	OFF	30 - 90	0.5 - 2.5	2 - 5	1 - 6
Body	ON	30 - 100	1.5 - 4	2 - 5	1 - 6

\*The skin must be completely healed before further treatment.

These parameters are just a recommendation. Every patient is different and presents with varying degrees of tissue response to heat. Always adjust the treatment settings based on the patient's feedback and skin response.



One Platform Endless Possibilities

EXION™

# SETTINGS RECOMMENDATION

## Insulated Needle Tips

Suitable for skin types I-VI



Treatment zones	Extended mode	Energy* (%)	Needle depth (mm)	Number of treatments	Frequency of treatments** (weeks)
Face	OFF	30 - 70	0.5 - 2.5	2 - 5	1 - 6
Body	ON	30 - 80	1.5 - 4	2 - 5	1 - 6

\*At higher energy levels greater than 40%, the use of EXION Fractional RF applicator is limited to skin types I-IV.

\*\*The skin must be completely healed before further treatment.

These parameters are just a recommendation. Every patient is different and presents with varying degrees of tissue response to heat. Always adjust the treatment settings based on the patient's feedback and skin response.



One Platform Endless Possibilities

EXION™

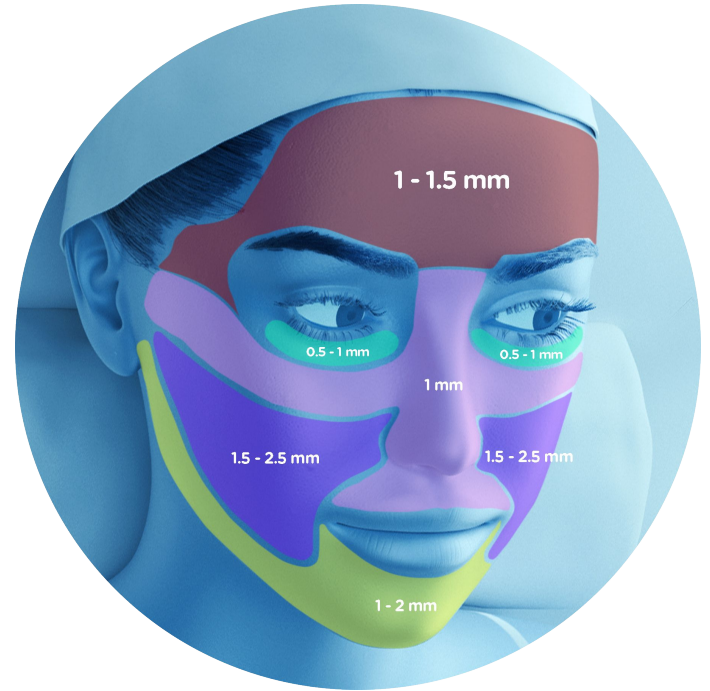
# NEEDLE DEPTH RECOMMENDATION

## Face

- Bony Prominences 0.5 - 1.5 mm
- Periorbital and perioral area 0.5 - 1 mm
- Nose 1 mm
- Neck 0.5 - 1 mm

## Body

- 2 - 4 mm



These parameters are just a recommendation.  
Always adjust the treatment settings based on  
the patient's feedback and skin response.



One Platform Endless Possibilities

EXION™

# SETTINGS RECOMMENDATION

## Based on Indication

FACE Indication	Extended mode	Energy (%)	Depth (mm) Based on treated area
Wrinkles	Off	30 - 90	0.5 – 2.5
Acne scars face	Off	40 - 90	0.5 – 2.5
Skin rejuvenation	Off	30 - 80	0.5 – 2.5
Skin laxity face	Off	40 - 90	0.5 – 2.5
Skin texture improvement face	Off	30 - 80	0.5 – 2.5

BODY indication	Extended mode	Energy (%)	Depth (mm) Based on treated area
Acne scars body	On	50 - 100	2 - 4
Stretch marks	On	40 - 100	1.5 – 4
Skin laxity body	On	40 - 100	2 – 4
Subdermal remodelling	On	40 - 100	2 – 4
Skin texture improvement body	On	40 - 100	2 – 4

These parameters are just a recommendation. Always adjust the treatment settings based on the patient's feedback and skin response. Start on the mild setting and gradually increase the RF power according to patient's feedback.



# Clear RF

## Treatment Specifics



One Platform Endless Possibilities

EXION™

# SETTING TREATMENT PARAMETERS

## Settings verification via test shots:

- Perform several test shots.
- Wait 10 to 15 minutes to observe the reaction of light skin, and wait longer to observe the reaction of dark skin.
- The endpoints of successful therapy are minimal to substantial erythema and edema.
- Adjust the treatment parameters according to patient feedback and skin reaction.



# SETTINGS RECOMMENDATION

## EXION Clear RF 64 tip

Skin type	Energy* (%)	Number of treatments	Frequency of treatments** (weeks)
Skin type I-III	20 - 100	2 - 5	1 - 6
Skin type IV-VI	20 - 70	2 - 5	1 - 6

\*At higher energy levels greater than 70%, the use of EXION Clear RF 64 tip is limited to skin types I-IV.

\*\*The skin must be completely healed before further treatment.

These parameters are just a recommendation. Every patient is different and presents with varying degrees of tissue response to heat. Always adjust the treatment settings based on the patient's feedback and skin response.



One Platform Endless Possibilities

EXION™

# SETTINGS RECOMMENDATION

## Treatment strategy

### Mild

- Lower RF intensities (typically 0-50%) for gentler microablation
- Multiple-sessions\*\*
- Suitable for patients needing quick recovery

### Intense

- Increased RF intensities (typically 50-100%\*) for deeper microablation
- Fewer sessions\*\*
- Ideal for patients comfortable with temporary scabbing

\*At higher energy levels greater than 70%, the use of EXION Clear RF 64 tip is limited to skin types I-IV.

\*\*The skin must be completely healed before further treatment.

These parameters are just a recommendation. Every patient is different and presents with varying degrees of tissue response to heat. Always adjust the treatment settings based on the patient's feedback and skin response.



One Platform Endless Possibilities

EXION™

# TREATMENT ESSENTIALS

## Drying of the skin:

- Ensure the skin is completely dry before and during the entire treatment.
- After wiping the of the numbing cream wait at least 3-5 minutes before starting the therapy.
- Rewipe the skin if it moistens.

## Cleanliness of the pins:

- Check the cleanliness of the pins regularly.
- Signs of burns may indicate accumulate debris on pins.
- Ensure clean tips during.

## Post-treatment recommendations:

- Explain Aftercare steps to patient - AfterCare Leaflet.



# TREATMENT

## EXION FACE APPLICATOR



One Platform Endless Possibilities

EXION™

# TREATMENT PREPARATION

- Remove any jewelry from the treatment area.
- Clean the skin from any makeup or other cosmetics.
- Treatment area should be free from hair. Shave treatment area if necessary.
- Prepare the ultrasound gel for the treatment



Ultrasound gel

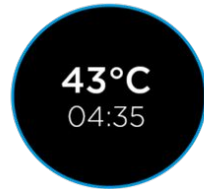


# EXION FACE APPLICATOR SET-UP

**INFORMATIVE SCREEN**  
provides basic therapy  
info right on the  
applicator's display



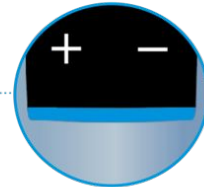
**THERMAL SENSOR**  
enables user to monitor  
temperature throughout  
the entire treatment



**DYNAMIC IMPEDANCE TECHNOLOGY**  
constantly monitors the skin  
impedance changes during  
the treatment



**INTUITIVE TOUCH SCREEN**  
allows to adjust the setting  
right on the applicator's  
display



**VISUAL CONTROL SYSTEM**  
light guide changes frequency  
and color of blinking  
according to current treatment  
state



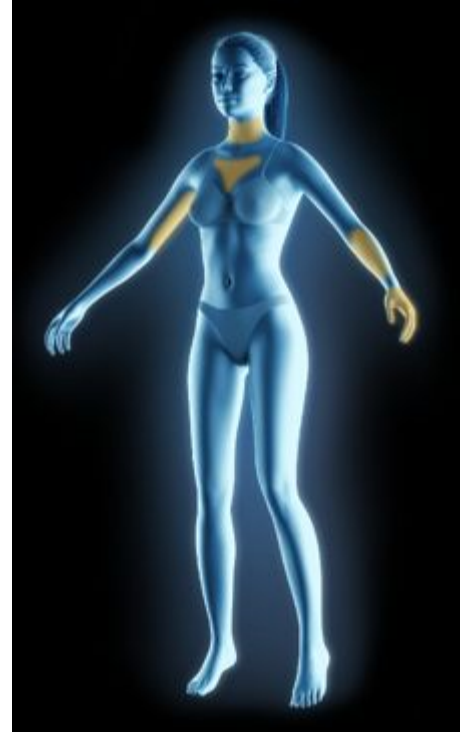
**DUAL ENERGY DELIVERY**  
delivering targeted  
ultrasound &  
radiofrequency  
simultaneously



One Platform Endless Possibilities

EXION™

# TREATMENT AREAS



One Platform Endless Possibilities

EXION™

# TREATMENT TECHNIQUE

Décoltage



Forearms



Forehead



Neck



Submentum



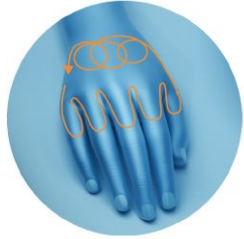
Upper arms



Upper cheeks



Hands



Lips



Lower cheeks



Perioral area



Periorbital area



Full face 1



Periorbital Area  
Lower cheeks  
Submentum

Full face 2



Forehead  
Upper cheeks  
Lower cheeks



One Platform Endless Possibilities

EXION™

# TREATMENT TECHNIQUE

- Apply the conductive gel to the treatment area to ensure good energy flow. To maintain adequate energy flow, re-apply the gel as needed throughout the procedure.
- Begin the therapy by gently moving the applicator's tip over the treated area to create tissue contact.
- Move the applicator tip over the treated area. Applicator contact with the tissue is monitored throughout the entire treatment session. In case of improper applicator contact the delivered energy may be limited by the device.
- The speed at which the tip is moved impacts the distribution of energy to the tissue and, consequently, the temperature. At a given RF power setting, the patient will feel more heat when the tip is moved slower.
- If the patient feels the treatment becomes uncomfortable, pause the therapy, turn the RF power setting down, and evaluate the patient.
- Patient feedback is crucial and must be frequently requested throughout the treatment and evaluated to determine proper therapy settings to reduce the risk of burns or injury.



# SETTINGS RECOMMENDATION

Treatment Area	Radiofrequency (%)	Average treatment time (min)	Number of treatments	Frequency of treatments (days)
Decolletage	85-95	7 - 10	4	2 - 14
Forearms	75-85	7 - 10	4	2 - 14
Forehead	65-75	5	4	2 - 14
Hands	90-100	6 - 8	4	2 - 14
Lips	30-40	4	4	2 - 14
Lower cheeks	75-85	6	4	2 - 14
Neck	55-65	8 - 10	4	2 - 14
Perioral area	65-75	4	4	2 - 14
Periorbital area	60-70	5	4	2 - 14
Submentum	55-65	5	4	2 - 14
Upper arms	65-75	10 - 12	4	2 - 14
Upper cheeks	65-75	6	4	2 - 14

These parameters are just a recommendation. Every patient is different and presents with varying degrees of tissue response to heat. Always adjust the treatment settings based on the patient's feedback.



One Platform Endless Possibilities

EXION™

# MAINTENANCE

- The tip of EXION Face applicator should be cleaned immediately after procedure to prevent debris from becoming affixed. Wipe them with a soft cotton cloth that has been moistened in 70% alcohol.



Never use acid cleaners (such as those containing phosphorus acid) to clean the applicator and the applicator tip. Using cleaning agents containing acids will cause damage to the coating of the applicator and the applicator tip.

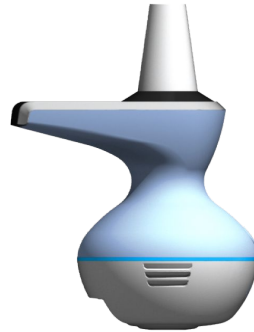


Never use abrasive cleaning materials.



# TREATMENT

## EXION BODY APPLICATOR



One Platform Endless Possibilities

EXION™

# TREATMENT PREPARATION

- Remove any jewelry from the treatment area.
- Clean the skin and remove any makeup or other cosmetics.
- Treatment area should be free from hair. Shave treatment area if necessary.
- Prepare the mineral oil for the treatment



Mineral Oil



# EXION BODY APPLICATOR SET-UP

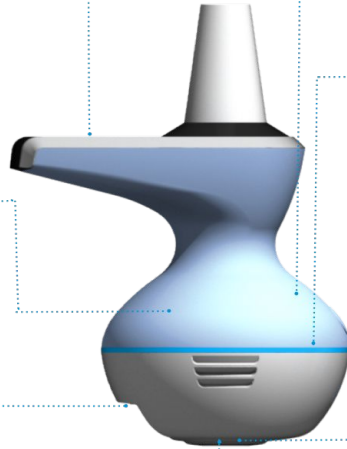
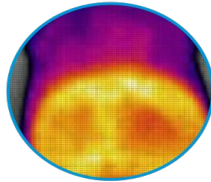
**INTUITIVE TOUCH SCREEN**  
allows to adjust the setting  
right on the applicator's  
display



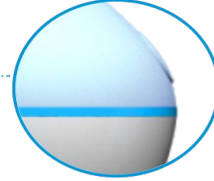
**CONTACT CONTROL SYSTEM**  
ensures patient safety in  
case of sudden loss of the  
applicator contact



**THERMAL IMAGER**  
enables user to monitor  
temperature and its  
homogeneity throughout the  
entire treatment



**DYNAMIC IMPEDANCE INTELLIGENCE**  
constantly monitors the skin  
impedance changes during the  
treatment



**VISUAL CONTROL SYSTEM**  
light guide changes frequency  
and color of blinking according  
to current treatment state



**ACTIVE COOLING**  
creates thermal gradient  
necessary for treatment of  
deep structures



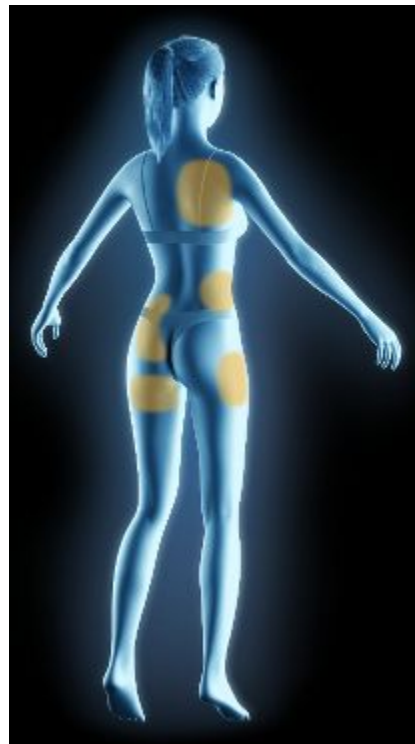
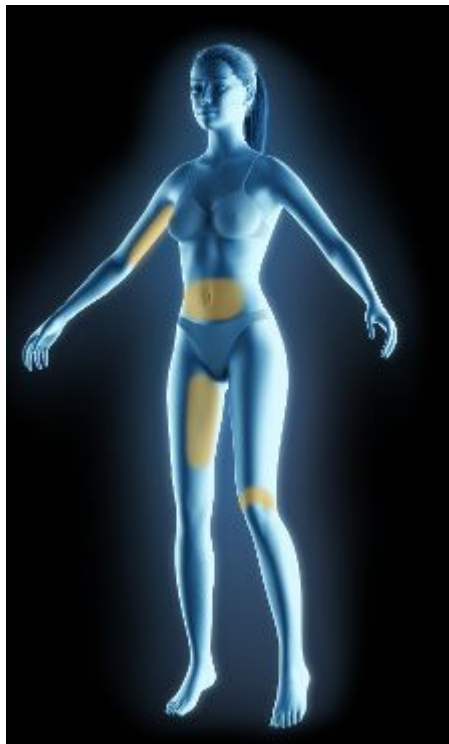
**DUAL ENERGY DELIVERY**  
delivering targeted ultrasound  
& radiofrequency  
simultaneously



One Platform Endless Possibilities

EXION™

# TREATMENT AREAS



One Platform Endless Possibilities

EXION™

# TREATMENT TECHNIQUE

Abdomen



Banana Roll



Upper back



Love handles



Upper arms



Buttocks



Inner thighs



Knees



Saddle bags



One Platform Endless Possibilities

EXION™

# TREATMENT TECHNIQUE

- Apply mineral oil to the treatment area to ensure good energy flow. To maintain adequate energy flow, re-apply the oil as needed throughout the procedure.
- Start the therapy by creating tissue contact by smooth motion of the applicator's tip over the treated area.
- Continuously move the applicator tip over the treated area. Applicator contact with the tissue is monitored throughout the entire treatment session. In case of improper applicator contact delivered energy is limited by the device.
- The RF power on the applicator should be set to the level where the patient feels a comfortable heat sensation. The patient should not feel a burning sensation or pain.
- The speed at which the tip is moved impacts distribution of energy to the tissue and, consequently, the temperature. At a given RF power setting, the patient will feel more heat when the tip is moved slower.
- If the patient feels the treatment becomes uncomfortable, pause the therapy, turn the RF power setting down, and evaluate the patient.
- Patient feedback is crucial and must be frequently requested throughout the treatment and evaluated to determine proper therapy settings to reduce the risk of burns or injury.



# SETTINGS RECOMMENDATION

Treatment Area	Radiofrequency (%)	Average treatment time (min)	Number of treatments	Frequency of treatments (days)
Abdomen	60-80	15 - 20	4	2 - 14
Banana roll	55-65	7 - 12	4	2 - 14
Upper back	35-45	7 - 12	4	2 - 14
Buttocks	35-45	7 - 12	4	2 - 14
Inner thighs	50-60	7 - 12	4	2 - 14
Knees	25-35	8	4	2 - 14
Love handles	50-60	8 - 12	4	2 - 14
Saddle bags	55-65	8 - 12	4	2 - 14
Upper arms	35-45	7 - 12	4	2 - 14

These parameters are just a recommendation. Every patient is different and presents with varying degrees of tissue response to heat. Always adjust the treatment settings based on the patient's feedback.



One Platform Endless Possibilities

EXION™

# ACTIVE COOLING

## TARGET DIFFERENT TISSUE LAYERS WITH THE ACTIVE COOLING

### COOLING OFF

Heating the entire epidermis & dermis down to the Germinal layer.

*(skin laxity)*

### COOLING LEVEL 1

Protecting the skin while heating subdermal layers up to 1.5 cm.  
*(skin laxity/fat reduction)*

### COOLING LEVEL 2

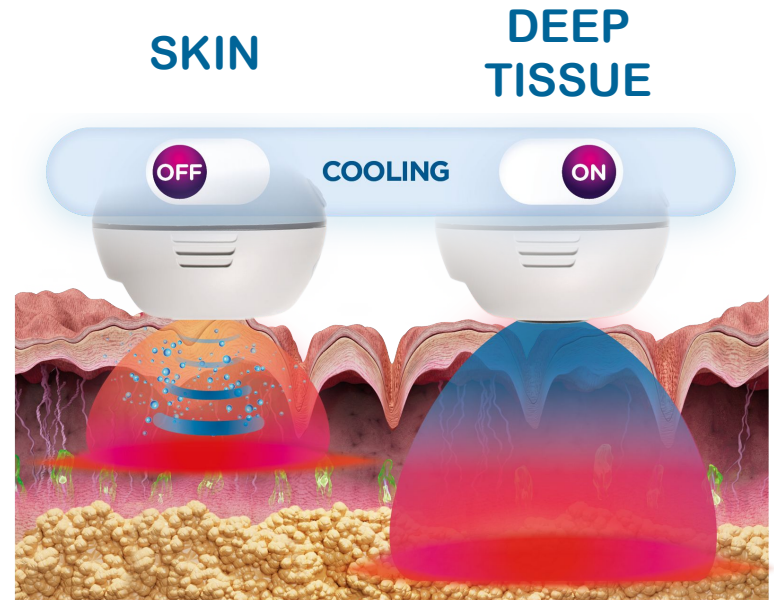
Protecting the skin while heating subdermal layers ranging from 1.5 to 3 cm.

*(fat reduction)*

### COOLING LEVEL 3

Protecting the skin while heating subdermal layers ranging from 3 to 5 cm.

*(fat reduction)*



One Platform Endless Possibilities

EXION™

# MAINTENANCE

- The tip of EXION Body applicator should be cleaned immediately after procedure to prevent debris from becoming affixed. Wipe them with a soft cotton cloth that has been moistened in 70% alcohol.



Never use acid cleaners (such as those containing phosphorus acid) to clean the applicator and the applicator tip. Using cleaning agents containing acids will cause damage to the coating of the applicator and the applicator tip.



Never use abrasive cleaning materials.



# TREATMENT

## EMFEMME 360° APPLICATOR



One Platform Endless Possibilities

EXION™

# SAFETY PRECAUTIONS AND WARNINGS



Never use the disposable tips if the packaging or the tip itself appears damaged.

All tips are single use only!



# TREATMENT PREPARATION

- The easiest way to perform the EMFEMME 360° treatment is to have the patient sit in the lithotomy position, a semi-seated position on a gynecology chair with stirrups.
- Remove any jewelry from the treatment area.
- Treatment area should be free from hair. Shave treatment area if necessary.
- Prepare the ultrasound gel for the treatment



Ultrasound gel



# EMFEMME 360° APPLICATOR SET-UP

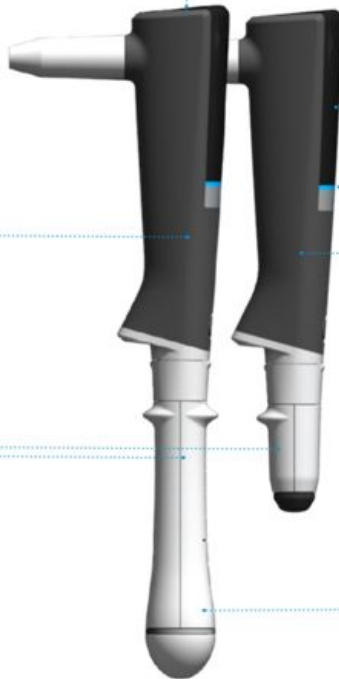
**INFORMATIVE SCREEN**  
provides dynamic therapy info right on the applicator's display.



**SHORT TREATMENT**  
provides an 8-minute internal therapy.

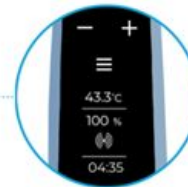


**PLUG & PLAY TIPS**  
enables connecting various tip types according to patient's needs.



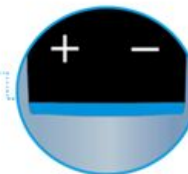
**INTUITIVE TOUCH SCREEN**

Settings adjustment right on the applicator's display.



**VISUAL CONTROL SYSTEM**

light guide changes frequency and color of blinking according to current treatment state.



**DYNAMIC IMPEDANCE TECHNOLOGY**

constantly monitors the skin impedance changes during the treatment resulting in reproducible results.



**TEMPERATURE THERAPY TRACKER**

enables users to track temperature trends throughout the entire treatment and supports consistent outcomes.



One Platform Endless Possibilities

EXION™

# SINGLE USE TIP SELECTION

## Internal use

Select the 360° V probe based on the severity of patient's condition.



V-30 tip



V-24 tip

## External use

Select the V TIP for the treatment of the outer areas.



V-tip

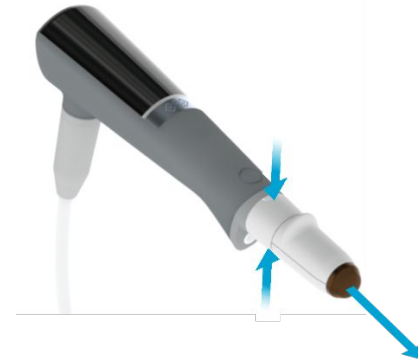


# ATTACHING/DETACHING THE TIP



## ATTACHING THE TIP

Attach the tip in the direction so that the line on the raised grip follows the line on the applicator.



## DETACHING THE TIP

Detach the tip by pressing both raised grips while pulling the tip out of the applicator.

Disposable tips are for single use only. They must be discarded and replaced by a new one after each treatment to prevent cross contamination between patients.



# TREATMENT TECHNIQUE

## Internal

- Disinfect the disposable tip and allow it to dry thoroughly prior to the treatment.
- Apply the conductive gel to the treatment area to ensure good energy flow.
- Insert the disposable tip into the vaginal canal through the introitus.
- Begin the therapy by pressing the trigger button while moving the applicator through the vaginal canal.
  - Move the applicator slowly back and forth, staying within the vaginal area.
  - Maintain a safe depth and angle.
  - Add more gel if you feel too much resistance while moving the applicator
- Patient feedback is crucial and must be frequently requested throughout the treatment and evaluated to determine proper therapy settings to reduce the risk of burns or injury.

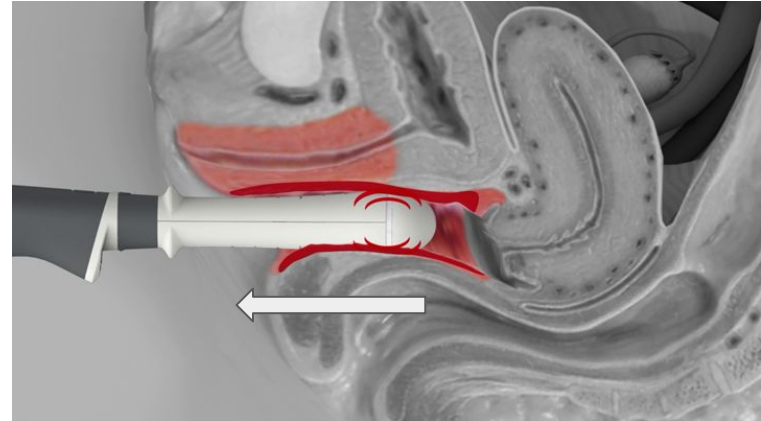
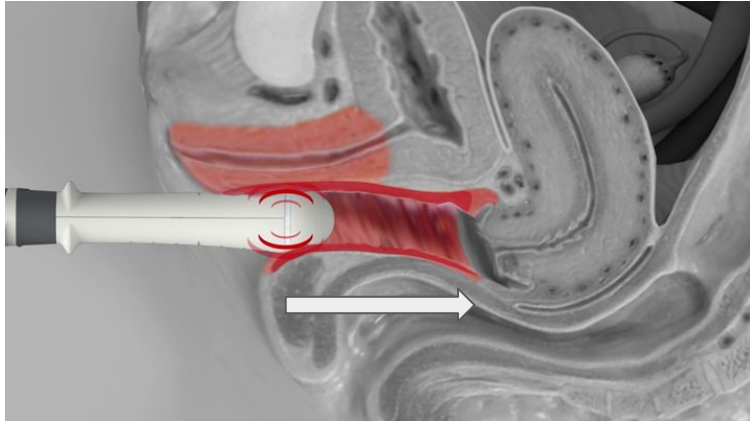


Avoid going beyond the protruding stop marker



# SETTINGS RECOMMENDATION

V 24 / V 30



Treatment Area	Applicator Tip	Preset	Average treatment time (min)	Number of treatments	Frequency of treatments (days)
Vaginal Canal	V 24 / V 30	Internal	8	3*	2 - 14

\*Ideally, treatment should be planned according to the menstrual cycle. With just 3 treatments, it's possible to complete the entire course within a cycle.



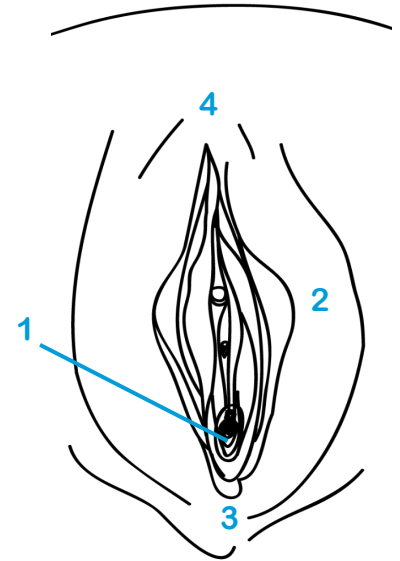
One Platform Endless Possibilities

EXION™

# TREATMENT TECHNIQUE

## External

- Disinfect the disposable tip and allow it to dry thoroughly prior to the treatment.
- Apply the conductive gel to the treatment area to ensure good energy flow.
- To treat the entire vulva, divide the area into the four areas and treat them one after the other:
  1. Introitus
  2. Labia majora
  3. Perineum
  4. Mons pubis (optional)
- Start by gently gliding the applicator tip to make tissue contact, then press the trigger button. Keep the applicator in constant motion along the suggested path to ensure uniform energy distribution.
- Patient feedback is crucial and must be frequently requested throughout the treatment and evaluated to determine proper therapy settings to reduce the risk of burns or injury.



# SETTINGS RECOMMENDATION

V 24 / V 30



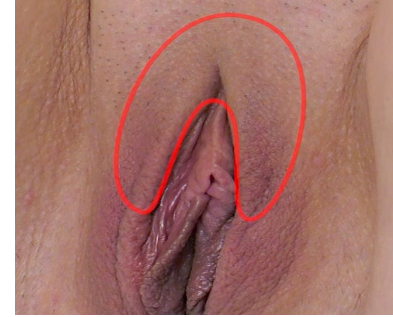
1. Introitus



2. Labia Majora



3. Perineum



4. Mons Pubis

Treatment Area	Preset	Average treatment time (min)	Number of treatments	Frequency of treatments (days)
Introitus	External	3 - 5	3*	2 - 14
Labia Majora	External	3 - 5	3*	2 - 14
Perineum	External	3 - 5	3*	2 - 14
Mons Pubis	External	3 - 5	3*	2 - 14

\*Ideally, treatment should be planned according to the menstrual cycle. With just 3 treatments, it's possible to complete the entire course within a cycle.



One Platform Endless Possibilities

EXION™